

SXS ACCESSORIES

THERE'S ALWAYS MORE TO DO



When there are loads to haul, fields to work and trails to put behind you, there's simply no room for machines that don't cut the mustard. Argo offers an exclusive line of Argo-engineered products designed to specifically fit your machine and your lifestyle. Check them out, bolt them on and get back out there!

**BRUSHGUARD**

900-0364

Application: 2023 - Current Magnum 500

Designed specifically for the Magnum 500, this ARGO designed front brushguard is made with heavy-duty 1 3/4" steel construction. *Easy 4-bolt attachment system makes installation fast and secure. The edge-to-edge, top to bottom protection provides piece of mind for your grill and radiator. High-gloss powder-coated paint provides protection to keep this brushguard looking good.

*Upper mounting brackets will need to be installed onto the chassis first.

**REAR BUMPER ACC**

900-0367

Application: 2023 - Current Magnum 500

Designed specifically for the Magnum 500, this ARGO designed rear bumper is made with heavy-duty 1 3/4" steel construction. High-gloss powder coated paint provides protection to keep this bumper looking good.

**STORAGE & TRAILERABLE COVER**

900-0545

Application: 2023 - Current Magnum 500

Protects your investment from the elements when not in use. Long term or short term this cover will help preserve the interior of your ATV.

Custom fit for the Magnum XF series

**SOFT ENCLOSURE KIT**

900-0505

Application: 2023 - Current Magnum 500

Protects driver, passenger and cargo from outdoor elements. Features removable sides and doors.

Kit Includes:

900-0376 Windshield

900-0377 Doors

900-0506 Top/Back

SEE AN AUTHORIZED ARGO DEALER FOR CURRENT PRICING INFORMATION

PLOWs/TRACKS

OIL & CARE GARMENTS SxS ACCESSORIES ATV ACCESSORIES XTV ACCESSORIES



XF 500 PLOW KIT
900-0522

Application: 2023 - Current Magnum 500

Kit Includes:
900-0451 Pushframe
900-0449 Blade 66"
900-0446 Chassis Mount-XF 500



Blade 66"
900-0449

Application: 2023 - Current Magnum 500

Retire that snow shovel forever by adding a plow to your Argo SxS. This 66" wide x 15" high plow allows you to maximize your snow removal effort. The heavy gauge steel and 1/4" replacable thick scrape curved blade provides years of pushing and leveling. Anti-stick stamped ribs for blade strength and maintains float.

*Requires pushframe mount and pushframe for installation.



TRACK SYSTEM SxS
900-0413

Application: 2023 - Current Magnum 500

Argo has over 50 years of experience getting people to places others can't. Part of that has to do with traction. The Argo XR track system distributes weight over 4 tracks providing exceptional handling with friendly and predictable control. The 11.5" front track and 12.5" rear track have engineered radius track edges that are designed to prevent track catch and tip up.

We suggest initial installation to be done by authorized ARGO dealer to assure proper installation and setup. Reinstallation is less of an ordeal and could be completed in a couple of hours for those who possess some mechanical aptitude.

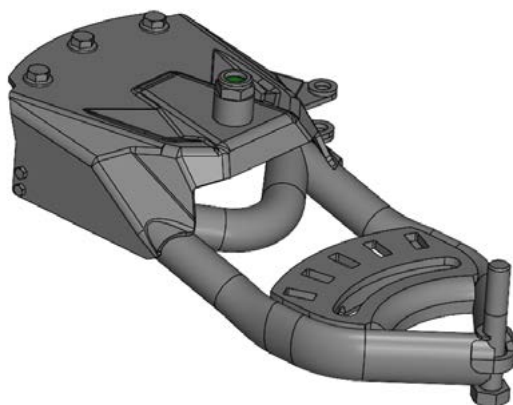
**PUSHFRAME SxS**

900-0451

Application: 2023 - Current Magnum 500

The Argo plow pushframe provides custom directional plowing with 25-degree side-to-side adjustments. Heavy-duty steel construction for durability and powder-coated paint for a maintenance free finish. Allows for easy and fast plow connection.

*Requires pushframe mount for installation.

**PUSH FRAME EXTENSION**

900-0547

Application: 2023 - Current Magnum 500

The Argo plow pushframe extension provides custom directional plowing with 25-degree side-to-side adjustments. Heavy-duty steel construction for durability and powder-coated paint for a maintenance free finish. Allows for easy and fast plow connection, recommended to be used if a track kit is installed.

*Requires pushframe mount for installation.

**MOUNT PLATE SxS**

900-0446

Application: 2023 - Current Magnum 500

Plowing snow starts here. The Argo custom-fit pushframe mount is what allows you to connect your pushframe to your SSV. Engineered and tested to optimize the push location on the frame. The low profile allows you to leave on your SSV year round. Built from powder-coated heavy gauge steel, this mount is built to last for years with minimum maintenance.