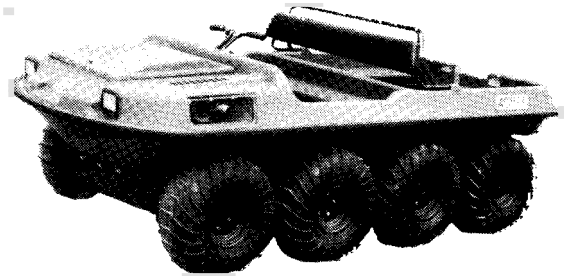


ARGO
RBI 2702



ARGO

RESPONSE PARTS MANUAL

Model No. V896-65
From Serial #RBI 2702

Foreword

ODG has prepared this parts manual for the **RESPONSE** model to assist both qualified mechanics and vehicle owners in ordering correct, quality replacement **ARGO** parts.

Proper and regular service, and replacing old, worn or broken parts with the correct **ARGO** replacement parts, are both essential to prolonging the life of the **ARGO**. Please refer to this parts manual before ordering any replacement part.

All information contained in this **RESPONSE** Parts Manual is based on the latest product specification available at time of printing. If your **RESPONSE** differs from the specifications contained in this manual, **contact Ontario Drive & Gear Limited for information.**

ODG reserves the right to alter specifications on the **RESPONSE** model at any time, without obligation or prior notification.

Reproduction of the **RESPONSE Parts Manual No. 896-65-1**, in whole or in part, is prohibited without prior written permission from **Ontario Drive & Gear Limited.**

Model Identification

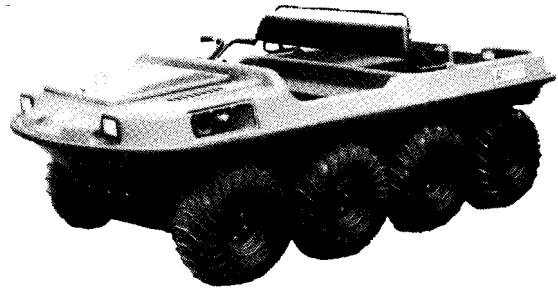
RESPONSE - Model No. V896-65-1

Explanation of Parts Manual Format

- Reference Number between Assembly Diagram and Component Parts List
- Part No.** - Argo replacement part number for identification and re-ordering
- Description** - Part Description for identification and re-ordering
 - Indicates the quantity of a part used in an Assembly

ARGO 8x8

RESPONSE

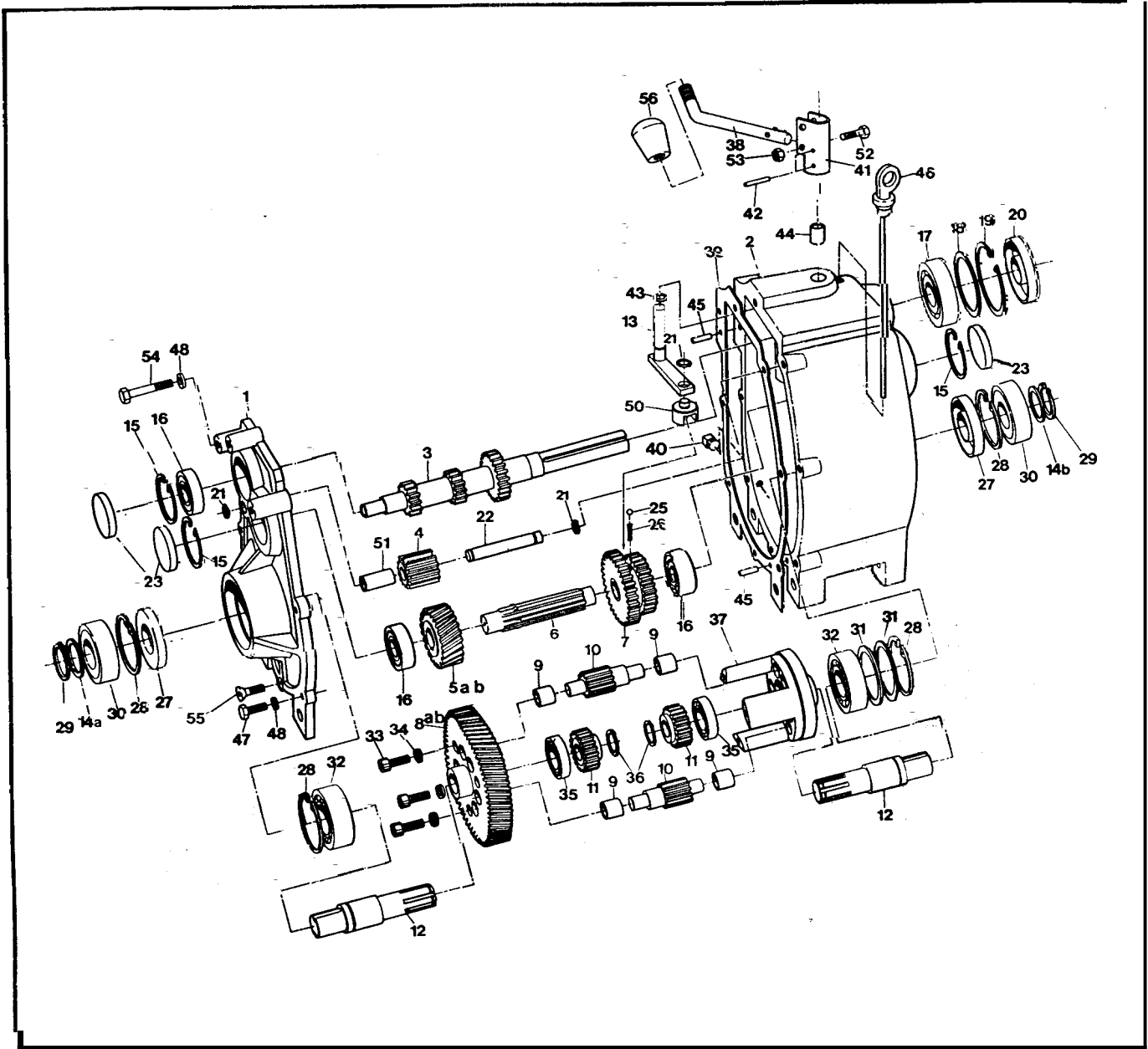


Using the Parts Manual

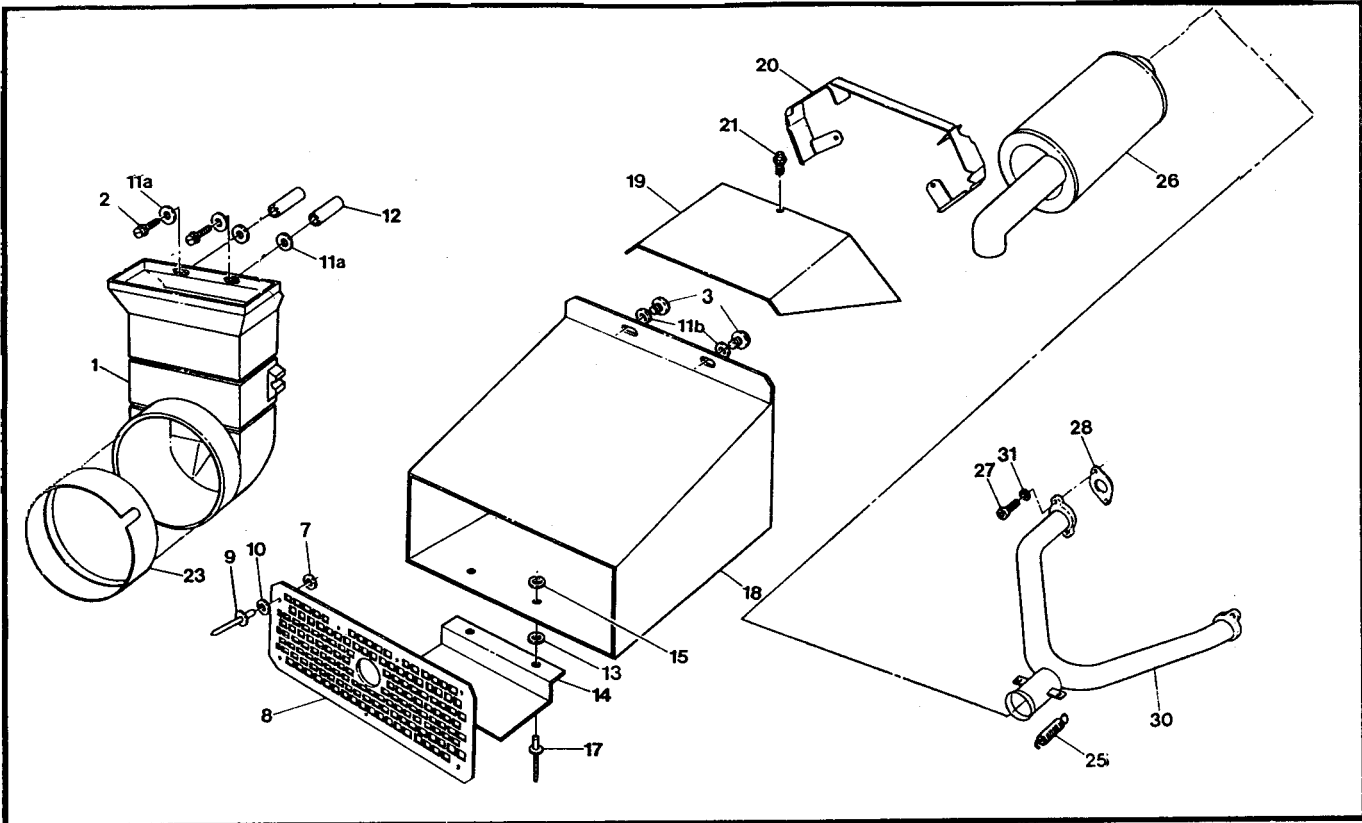
1. Find the major vehicle assembly in the Table of Contents on this page, and turn to that section.
2. Locate the part in the illustration that you wish to order.
3. Refer to the parts list in that section.
4. Find the correct part number (Part No.), part description (Description) and correct quantity (Qty).
5. Use *only* this information to order **ARGO** replacement parts. **DO NOT** attempt to order a replacement part by Ref number or Page number.

Table of Contents

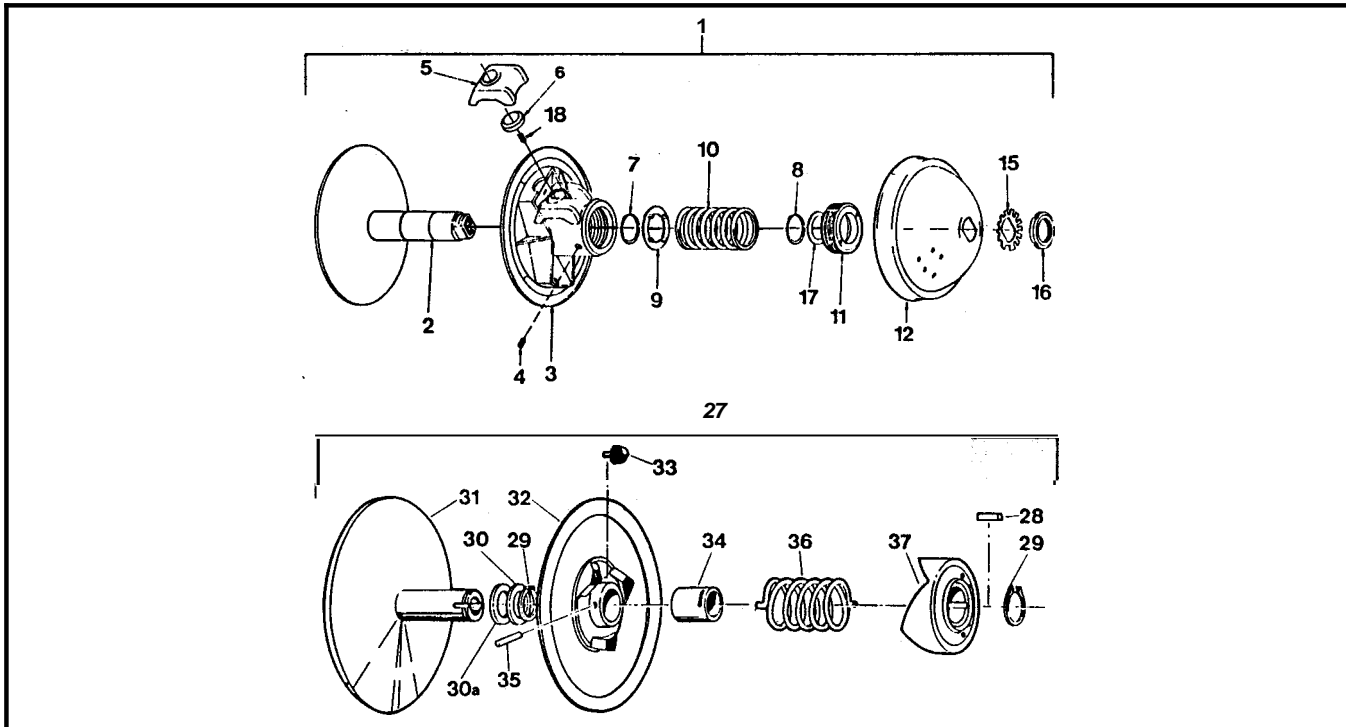
Foreword.....	i
Model Identification.....	i
Using the Parts Manual.....	ii
1.0 Transmission.....	1
2.0 Intake and Exhaust System.....	3
3.0 Clutch System.....	3
4.0 Power Pack Assembly.....	5
5.0 Brake System.....	7
6.0 Vehicle Body & Firewall.....	9
7.0 Frame & Drive System.....	11
8.0 Fuel System & Seat Assembly....	13
9.0 Electrical System.....	15



Ref	Part No	Description	Qty	Ref	Part No	Description	Qty
	510-17MU	Transmission Asm - MU, does not include Refs 38, 52, 53 & 56 uses Refs 5a & 8a		26	34-31	Spring, Compression - 7/32 x .50	1
	610-17GU	Transmission Asm - GU, does not include Refs 38, 52, 53, & 56 uses Refs 5b & 8b		27	102-03	Seal, Oil WBS 30x72x10	2
1	34-68	Cover, Transmission	1	28	106-0:	Retaining Ring #5000-281PA	4
2	34-99	Housing, Transmission	1	29	107-02	Retaining Ring N1400-118	2
3	34-21	Shaft, Input - 13/21T	1	30	101-05	Bearing, Ball 6306-2NSE C	2
4	34-16A	Gear Idler - 13T (incl. Ref 51)	1	31	114-01	Washer, Shim .020x2.25x2.8 1	2
5a	34-95	Gear, Helical - 24T (MU)	1	32	101-03	Bearing, Ball 6207-C 3	2
5E	34-97	Gear, Helical - 21T (GU)	1	33	103-04	SHCS, 5/16-18 x 1.00 PL	3
6	34-94	Shaft, Splined	1	34	108-02	Lockwasher, Hi-Collar 5/16, PL	3
7	34-91	Gear, Double - 26/33 T	1	35	101-15	Bearing, Ball 6005-C 3	2
8a	34-22	Gear Plate - 73T (M)	1	36	107-04	Retaining Ring N1400-98	2
8E	34-45	Gear Plate - 76T (G)	1	37	34-08	Cage	1
9	105-03	Bushing, Oilite -AA650	12	38	610-77	Shift Lever Rod	1
10	34-13	Gear, Planet -12 T	6	39	34-47	Gasket, Cover - 1/64"Thk	1
11	34-14	Gear, Sun - 21 T	2	4C	103-02	Plug, Magnetic 3/8-18 NPT	1
12	34-81	Shaft, Output	2	41	34-86	Holder, Shift Lever	1
13	34-65	Shifter Assem.	1	42	111-01	Pin, Spirol 5/32 x 1.00	2
14a	114-04	Washer, Shim .040 Thk	1	43	113-01	O-Ring 012-7147	1
14b	114-05	Washer, Shim .020 Thk	1	44	105-02	Bushing, Oilite - A4628	1
15	106-01	Retaining Ring #5000-187PA	3	45	104-03	Pin, Dowel 1/4" x 7/8" long	2
16	101-01	Bearing, Ball 62042-C 3	3	46	34-77	Dipstick, with breather	1
17	101-16	Bearing, Ball 6206-C3	1	47	103-06	HHCS 5/16-18x1.00 GR5 Zinc	4
18	114-02	Washer, Shim 2.062	is eq.	48	108-05	Lockwasher 5/16 Zinc	7
19	106-05	Retaining Ring N1300-244	1	50	34-63	Shift Yoke	1
20	102-05	Seal, Oil WBS 30x62x10	1	51	105-05	Bushing, Oilite - AA650-3 (in Ref.4)	1
21	107-05	Retaining Ring N1400-50	3	52	103-97	HHCS 1/4-20x1.25 GR5 Zc	1
22	34-11	Pin, Dowel 1/2 x 3.50	1	53	117-27	Locknut, Nylon 1/4-20 Zinc	1
23	31-07	Plug plate	3	54		See Section 4.0	
25	109-05	Ball, Steel 6mm 62-67 Rc	1	55	103-95	FHSC 5/16-18x1.0 GR8 Zin	1
				56	126-38	Knob, Shift	1



3.0 Clutch System



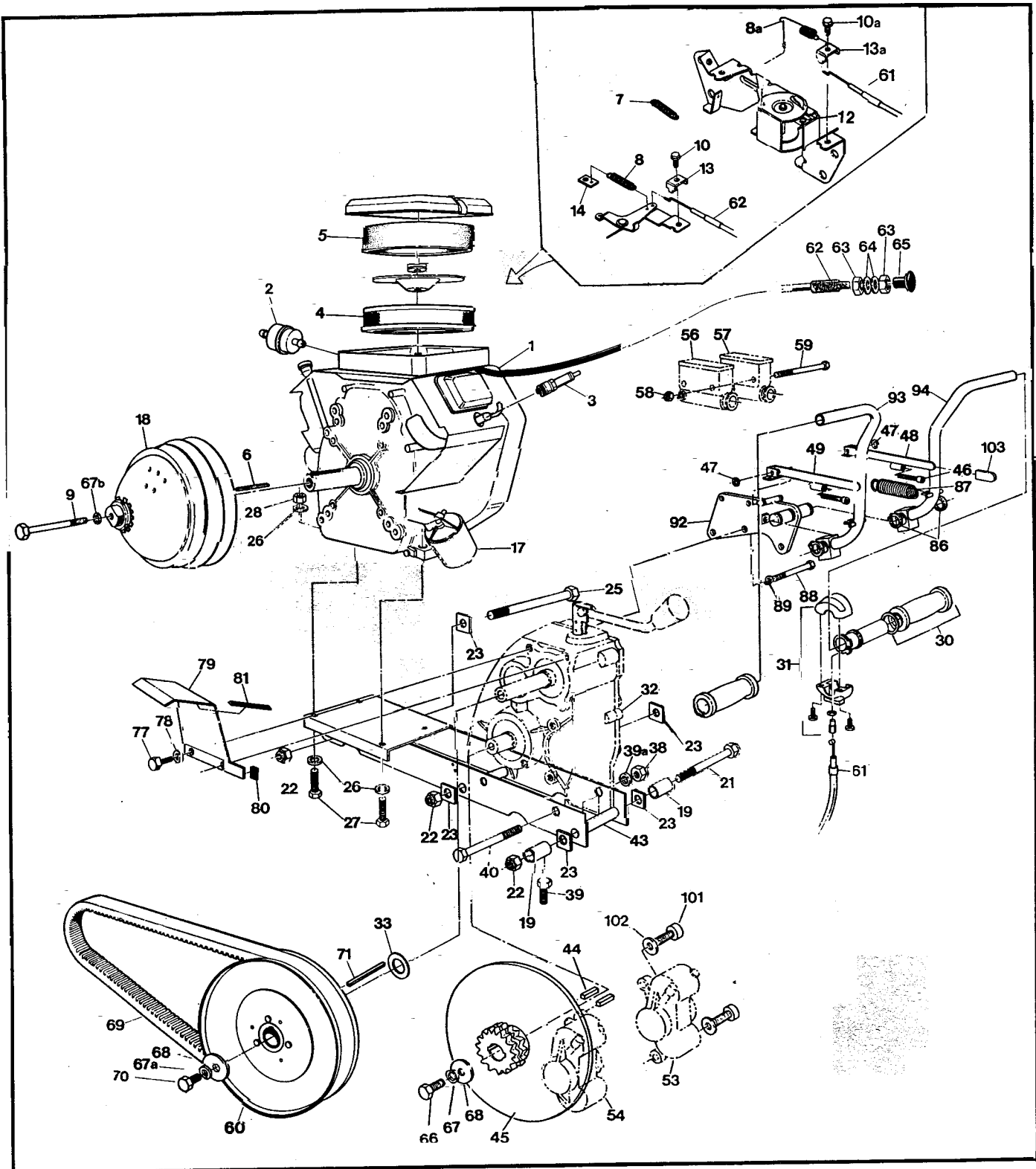
Ref	Part No.	Description	Qty
1	603-81	Duct, Intake	1
2	112-48	Screw, T/S HH #14x2.25 ZN	2
3	112-19	Screw, IHWH T/C Slot 1/4-20x0.	2
7	120-05	Washer, .195x.50x.040 Zinc	7
8	707-31	Screen, Exhaust	1
9	120-09	Rivet 3/16 x 1	7
10	125-59	Washer, Fibre - .062x.25x.50	7
11a	108-08	Washer, 1/4 SAE Zinc	4
11b	108-08		2
12	120-29	Spacer, .26 ID x 1.12 LG	2
13	125-58	Washer, Fibre - W-77F	2
14	707-28	Support, Exhaust Duct	1

Ref	Part No.	Description	Qty
15	120-04	Washer, .195x.50x.08 Zinc	2
17	120-13	Rivet - 3/16 x 5/8	2
18	707-32	Duct, Exhaust - Response	1
19	707-26	Cover, Engine Duct	1
20	707-25	Duct, Engine	1
21	103-11	screw, IHWH Slot 1/4-20x.50 ZN	3
23	603-82	Seal	1
25	126-57	spring, Exhaust	2
26	707-15	Muffler	1
27	112-30	SHCS, M8x1.25x20.0 Zinc	4
28	805024	Gasket	2
30	707-05	Manifold, Exhaust	1
31	108-02	Lockwasher, Hi-Collar 5/16, PL	4

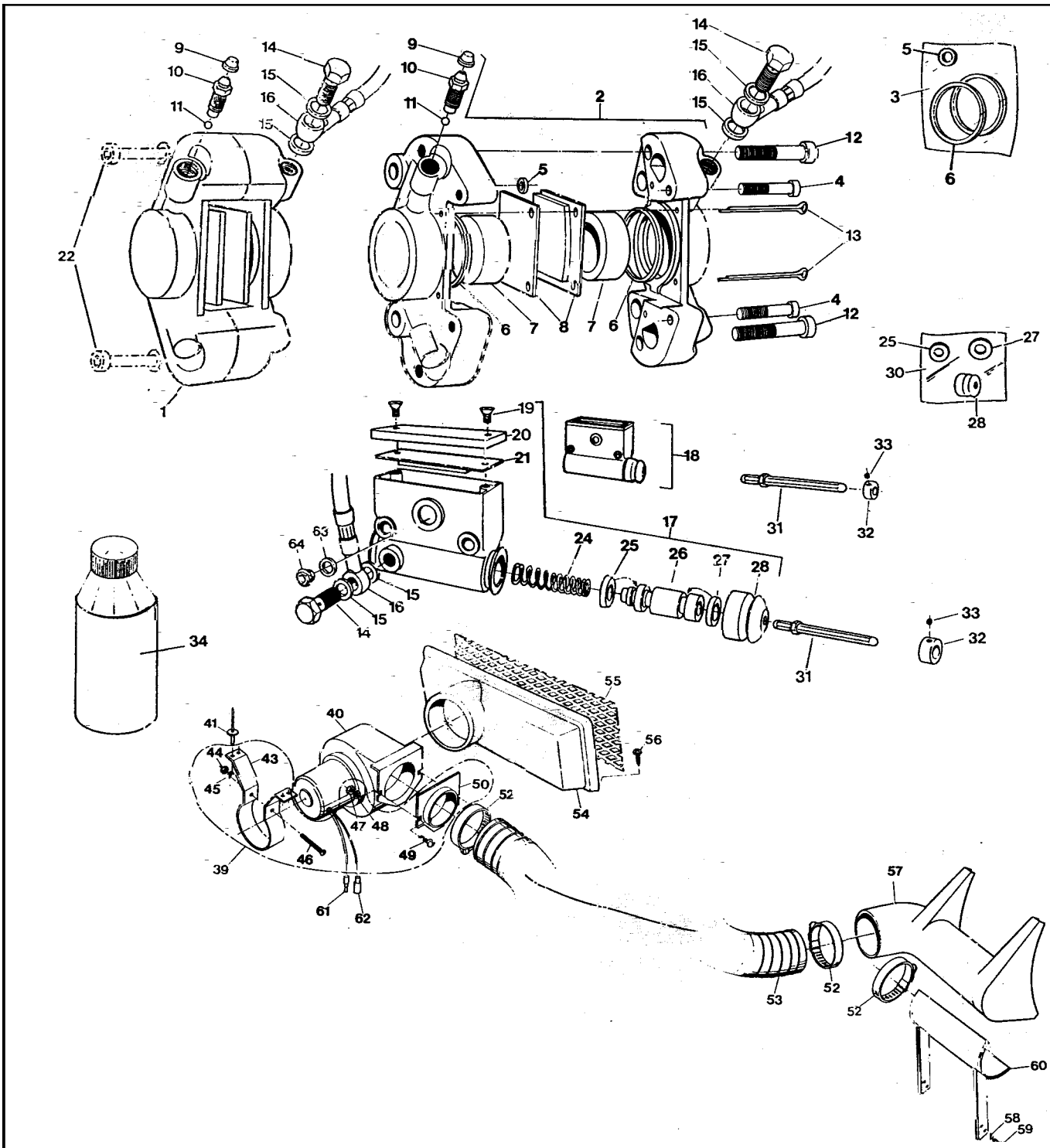
3.0 Clutch System

Ref	Part No.	Description	Qty
1	127-43	Clutch, Driver, keyed incl. Refs 2 to 17, PO DB0006	1
2	V01L411F	Pulley, Half - Fixed	1
3	V021F	Pulley, Half - Sliding	1
4	V046	Lock Screw (use Loctite 242)	1
5	V05BCR	Block - Red	3
6	C13-225	Slug, Lead 225 g	3
7	V08	Retaining Ring D1400-350	1
8	V08C	Retaining Ring N1408-137	1
9	V09	Spring Guide Plate	1
10	V10-48		
	108-18	Spring, Blue	1
11	V111	Threaded Cap	1
12	V1203CR	Cap, Type "A"	1
15	v15	Lockwasher	1
16	V162	Locknut	1
17	X-35-MA	Spacer	as req
18	C24-L1	Spring, Anti Noise	3

Ref	Part No.	Description	Qty
27	126-24	Clutch, Driven Model "B" SODB0001	1
		incl. Refs 28 to 37	
28	ASK-5	Key 1/4x1/4x3/4	1
29	ASR-6	Retaining Ring N1400-150A	2
30	ASA-1	Spacer .050" Thick	as req
30a	ASA-1-S	Spacer .025" Thick	as req
31	4FK25.4-250OD01	Pulley, Half - Fixed	1
32	AMC-2-250OD01	Pulley, Half - Sliding	1
		incl. Refs. 34 & 33	
33	ANS-2-T	Shoe, Cam	3
34	AMB-2	Bushing, Bronze	1
35	111-01	Pin, Spirol 5/32 x 1.00	1
36	ACS-3-188	Spring, Blue	1
37	AFC-4-1 C3D4	Cam	

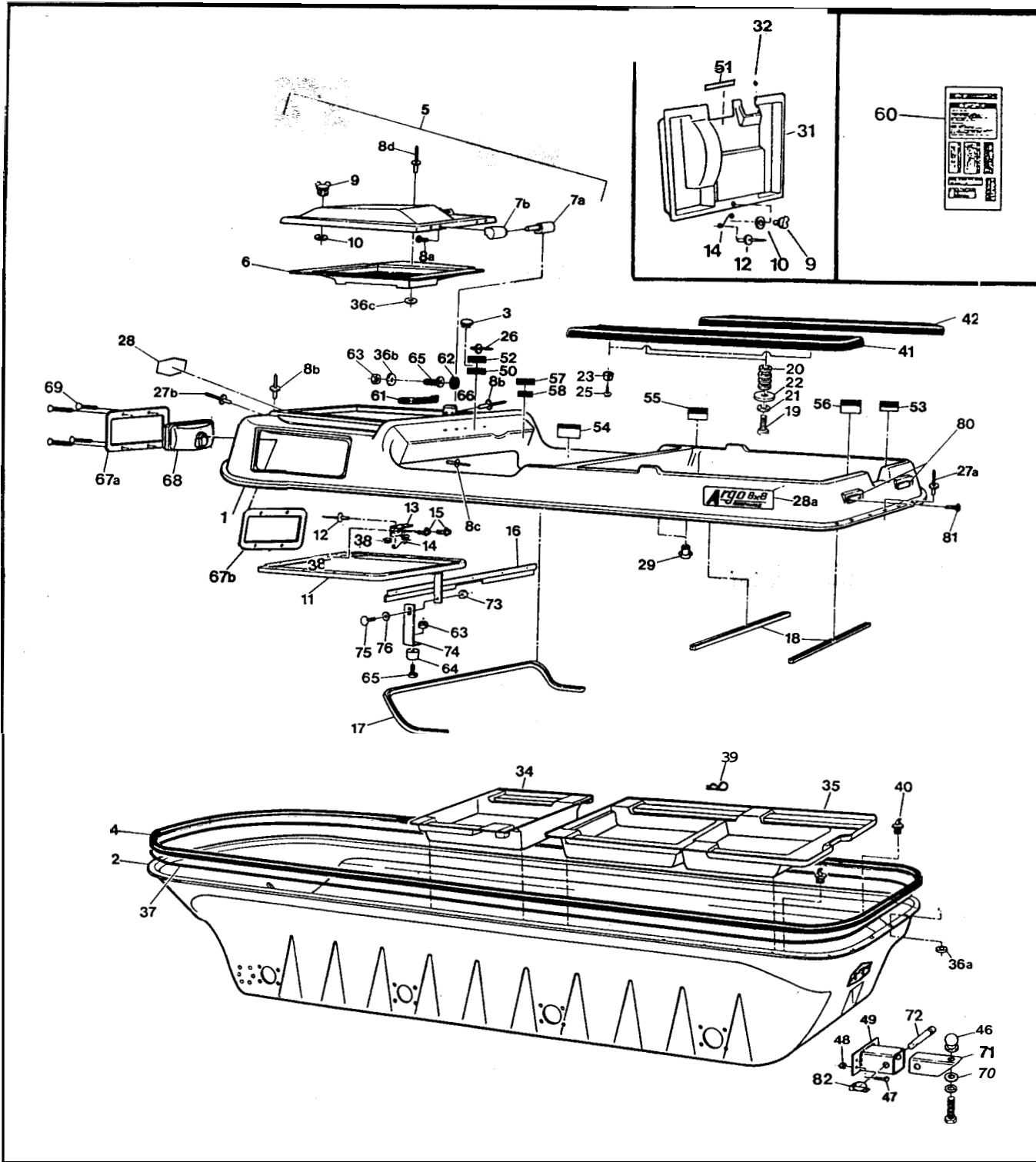


Ref	Part No.	Description	Qty	Ref	Part No.	Description	Qty
1	127-53	Engine - Vanguard 18 HP incl. refs 2-14, 17	1	43	611-66	Frame-Power Pack	1
2		See Section 8.0 Fuel System & Seat Assembly		44	110-14	Key 1/4x1/4x1.25	4
3	126-74	Spark Plug #3926	2	45	810-01	Brake Disc-#50-2x13T	2
4	394018	Filter, Air	1	46	103-69	SHCS 1/4-20x1.50 Zinc	2
5	272490	Element, Foam	1	47	113-02	O-Ring #106-8309	2
6	110-03	Key 1/4x3/16x2.375 RC46	1	48	810-21	Lever Assem., Brake - RH	1
7	127-31	Spring, Governor - Green	1	49	810-20	Lever Assem., Brake - LH	1
8	125-88	Spring, Return	1	3 to,		See Section 5.0 Brake System	
8a	127-49	Spring, Return	1	57			
9	112-28	HHCS, 3/8-24x4.5 GR5 Zinc	1	58	117-27	Locknut, Nylon 1/4-20Zinc	2
10	805169	Screw-Hex Head (Brigs #)	1	59	103-66	HHCS 1/4-20x4.00 Gr5 Zinc	2
10a	805169	Screw-Hex Head (Brigs #)	1	60		See Section 3.0 Clutch System	
13	805170	Clamp - Casing (Brigs #)	1	61	612-76	Cable Asm, Throttle	1
13a	805170	Clamp - Casing (Brigs #)	1	62	612-92	Cable Asm, Choke incl. 63	1
14	601-86	Clip, Retainer	1	63		Jam Nut, 5/16-24, Part of 62 Washer 5/16 SAE Zinc Knob, Choke - Black	2 2 1
17	126-95	Filter, Oil	1	66	103-18	HHCS 3/8-24x1.25 GR5Zinc	2
18		See Section 3.0 Clutch		67	108-06	Lockwasher, 3/8 S/R, Zinc	2
19	811-14	Spacer	2	67a	108-06	Lockwasher, 3/8 S/R, Zinc	1
21	112-57	HHCS 5/8-11x10.00 Gr5 Zc	1	67b	108-06	Lockwasher, 3/8 S/R, Zinc	1
22	117-09	Locknut, Nylon 5/8 Zinc	3	68	108-18	Washer 13/32x1.375x11GA	3
23	811-09	Washer, Square .64ID	5	69	125-56	Drive Belt	1
25	112-58	HHCS 5/8-18x7.50 Gr5 Zc	2	70	103-34	HHCS 3/8-16x1.25 GR5Zinc	1
26	108-24	Washer 5/16 SAE Zinc	8	71	110-09	Key 1/4x1/4x3.0	1
27	112-27	HHCS 5/16-18x1.75 GR5Zinc	4	77	103-17	HHCS 3/8-16x1.00 GR5Zinc	2
28	117-21	Locknut, Nylon 5/16-18 Zinc	4	78	108-26	Washer 3/8 Zinc	2
30	127-35	Grip, Molded Rubber	2	79	603-29	Guard, Belt Protect	1
31	100-57	Throttle Twist Grip	1	80	601-92	Vinyl Trim, 1.5"	1
32		See Section 1.0 Transmission		81	601-93	Vinyl Trim - 4.25"	1
33	108-36	Washer .06x1.00x1.375 Zinc	as rec			Retaining Ring N1400-75	4
38	117-06	Nut, Fin Hex 1/2-13Zinc	2	87	127-33	Spring, Extension - Strg Lever	2
39	103-53	HHCS 3/8-16x3.0 Full Thread	2	88	103-55	HHCS 5/16-18x2.75 Gr5 Zc	3
39a	108-07	Lockwasher 1/2 Zinc	2	89	108-05	Lockwasher 5/16Zinc	3
40	103-20	HHCS 1/2-13x6.50 GR5Zinc	2	92	850-61	Bracket Asm, Steering	1
				93	812-27	Lever Asm, Steering - LH	1
				94	812-26	Lever Asm, Steering - RH	1
				101	103-41	SHCS, 3/8-16x1.25 Zinc	4
				102	108-23	Washer 3/8 SAE Gr8 - Dich.	4
				103	125-89	Cap, Vinyl - Black	2

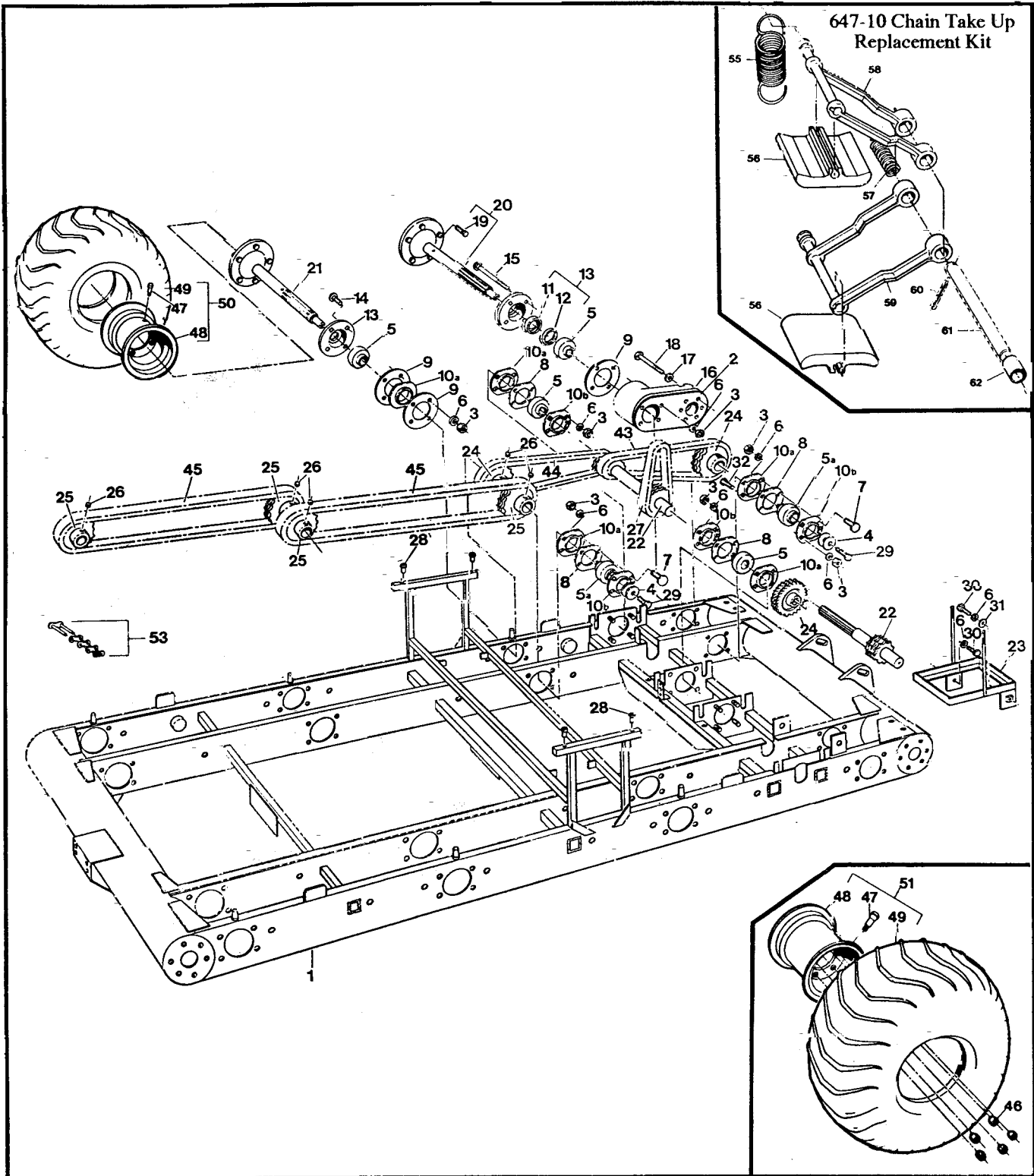


Ref	Part No.)	Description	Qty
1	166-05	Caliper Asm , Brake - L (incl. Refs 5 to 13)	1
2	166-06	Caliper Asm, Brake - R (incl. Refs 5 to 13)	1
3	161-01	O-Ring Kit, Caliper (incl. Refs 5 & 6)	2
4	160-40	SHCS M8x1.25x40 2N	2
5		Seal, Rubber-5mm (see Ref 3)	1
6		Seal, Piston-41mm (see Ref 3)	2
7	168-05	Piston 41mm	2x2
8	170-02	Brake Pad Set(4) -Non-asbestos	1
9	168-20	Plug, Rubber	ix2
10	168-03	Screw, Bleeding M10x1.0	ix2
11	109-03	Ball, Steel - 7/32 Dia.	ix2
12	160-41	SHCS M10x1.5x50mm Zinc	2x2
13	168-06	Pin, Cotter M3.2x50mm	2x2
14	160-44	Bolt, Banjo-M10x1.0x 21.0 zinc	4
15	160-01	Washer, Copper - 1.5x10.0x 14.0	8
16	163-01	Hose Asm,Hydraulic-300mm	1x2
17	165-06	Master Cylinder - left (incl. Refs 19 to 21, 24 to 28, 63 & 64)	1
18	165-05	Master Cylinder - right (incl. Refs 19 to 21, 24 to 28, 63 & 64)	1
19	160-42	FHMS M5x0.8x6mm	2x2
20	168-08	Cover	1x2
21	168-09	Cover, Rubber	1x2
22		See Section 4.0 Power Pack Assembly	
24	162-02	Spring, comp. 0.59 x 1.5	1x2
25		Seal, Primary, 19mm (see Ref. 30)	1x2
26	168-10	Piston 19mm dia.	1x2
27		Seal, Secondary, 19mm (see Ref. 30)	1x2
28		Boot, Rubber, (See Ref. 30)	1x2
30	161-25	O-Ring Kit-Master Cylinder (incl. Refs 25, 27 & 28)	1x2
31	812-13	Pin Asm, Plunger-Adjustable	2
32	812-17	Collar	2
33	112-02	SHSS 10-24x1/4 Knurl Cone PT,PL	2
34	126-19	Fluid. Brake-Silicon Dot 5 - .35L	

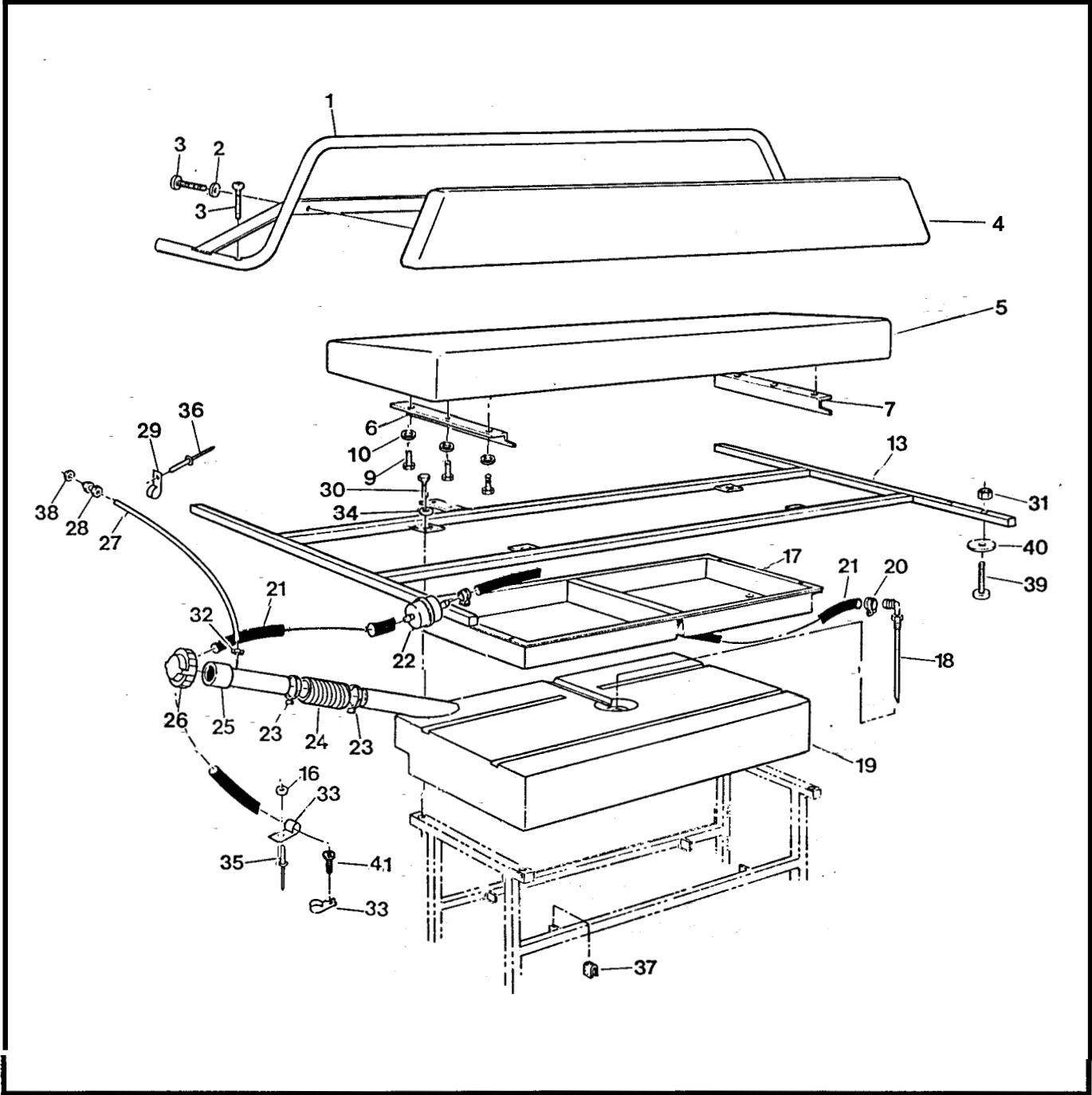
Ref	Part No.	Description	Qty
3s	125-92	Adpt. & Mounting Kit (incl. Refs 43 to 50)	
4c	125-91	Blower Fan	1
41	120-13	Rivet 3/16"x5/8	4
43		Mounting Bracket	1
44		Nut, #10-32	1
45	See	Lockwasher, 3/16"	1
4c	125-92	Screw, #10-32 x 2"	1
47	above	Nut, 1/4-20	2
48		Lockwasher, 1/4"	2
4s		Screw, 1/4-20x 5/8"	2
5c		Adaptor, 3" dia.	1
52	125-35	Clamp, Gear 3.50" HF-52	3
53	127-44	Hose, Intake 3" dia. x 46"	1
54	601-89	Intake Flange (specify clr)	1
55	126-61	Intake Screen	1
56	112-56	Pan HD Phil T/S #10x3/4 A Zinc	4
57	127-39	Brake Cool Air Duct	1
58	108-03	Lockwasher 1/4 Split Ring	4
59	112-19	Screw, IHWH T/C Slot 1/4-20x 1/2	4
6	668-11	Mounting Bracket - Duct	1
61	118-02	Terminal, Male -#76-1251	1
62	118-03	Terminal, Female - #76-1281	1
63	160-03	O-ring , Oil Window	.x2
64	168-14	Oil Window , Master Cylinder	1x2



Ref	Part No.	Description	Qty	Ref	Part No.	Description	Qty
1	801-44	Body + Hood, Upper-Response Replacement, specify colour (incl. Ref. 5b, 11, 12, 13, 14, 15)	1	36a	120-04	Washer, .195IDx.50ODx.08 Zc	60
2	801-45	Body, Lower - Response, specify colour	1	36b	120-05	Washer, .195x.50x.04 Zc	2
3	127-28	Plug, Nylon - Black	1	36c	120-04	Washer, .195 IDx.50 ODx.08 Zc	5
4	801-05	Bumper, Vinyl - 8x8	1	37	126-60	Vinyl Strip 1/2"x1/4"x37.5'	
5	602-37	Hood Kit - Response specify colour, (incl. 6 to 10436C)	1	38	120-05	Washer	
6	801-47	Duct, Intake Transition - Response, specify colour	1	39	100-16	Clip, Hitch Pin 1.625 Znc	
7a	127-45A	Pin, Hinge	2	40	100-18	Plug, Drain 5/8" x 13/32"	
7b	127-45B	Knuckle, Hinge	2	41	801-03	Seat, Rear LH - 8x8	1
8a	103-47	HHCS 10-24x3/8	8	42	801-02	Seat, Rear RH - 8x8	1
8b	120-13	Rivet 3/16x5/8	7	46	100-61	Coupler Ball (c/w Bolt+Wshr)	1
8c	120-13	Rivet 3/16x5/8	5	47	103-61	HHCS 3/8-24x1.50 GR5 Zc	4
8d	120-09	Rivet 3/16x 1	10	48	117-24	Locknut, Nylon 3/8-24 Zinc	4
9	126-10	Wing Stud	2	49	616-16	Hitch Assembly	1
10	126-09	Grommet, Alum. #GH-7	2	50	126-72	Plate, Holding Brake	1
11	602-24	FrameAsm, Hood	1	51	126-65	Shifting Plate	1
12	120-15	Rivet, 1/8x7/16	4	52	127-26	Steering Lever Plate & Winch	1
13	601-69	Spring Plate	1	53	126-67	Floor Pan Plate	1
14	126-11	Spring	2	54	126-68	Operation Plate	1
15	112-19	Screw, IHWH T/C Slot 1/4-20x 0.5"	2	55	126-69	Fuel Plate	1
16	602-29	Brace, Dash	1	56	126-70	Vehicle Capacity Plate	1
17	601-08	Vinyl Trim, 84"	1	57	126-64	Vehicle ID Plate	1
18	601-09	Vinyl Trim, 28"	2	58		U.S. Plate, Non-U.S. Argos only	1
19	112-04	HHCS, 1/4-20x3/4" GR2 Zc	4	60	126-73	French Decals, inc. 51-58 available as set only	1
20	108-25	Washer, Plate 1/4 Zinc	16	61	125-41	Dash Handle, incl. 62	1
	108-03	Lockwasher, 1/4 Split Ring	4	62		Plug cap, avail. only with 61	2
21	801-41	Washer, Seat	4	63	117-10	Locknut, Nylon #10-24 Zinc	3
22	126-75	Bumper, Plastic - Black	4	64	126-88	Bumper, Rubber	1
23	103-41	T/S PAN HD PHIL #10 5/8 A Z	4	65	103-25	PHMS #10-24x3/4" Zinc	3
	120-24	Rivet, Alum. 3/32x3/8 - all plates	34	66	602-38	Clip, Hood	1
27a	120-05	Rivet, 3/16x1	60	67a	613-75	Bezel, Headlamp	
27b	120-05	Rivet, 3/16x1	25	67b	613-76	Bracket, Headlight Backing	
28	601-44	Nameplate, "Argo"	1	68		See Section 9.0 Electrical System	1
28a	127-44	Nameplate, 8x8 Response	2	69	103-24BL	OHPS T/S #6 x1.00 Black	1
29	117-44	T-Nut 1/4-20PL	4	70	108-53	Washer, 3/4x1.5x.125 SAE	1
31	609-3	Firewall	1	71	616-19	Tube, Hitch - Insert	1
32	125-84	Grommet, Rubber	1	72	104-13	Pin, Top Link	1
34	803-02	Floor Pan, Front specify colour	1	73	117-15	Nut, Fin. Hex 3/8-16 Zinc	1
35	803-03	Floor Pan, Rear specify colour	1	74	602-27	Support, Adjustable	2
				75	103-89	C/Bolt 3/8-16x.75 Gr2 Zinc	4
				76	108-06	Lockwasher, 3/8 S/R, Zinc	
				80	127-01	Reflector, Red	1
				81	103-48	Pan HD PHIL T/S #10x5/8 A Zinc	
				82	104-11	Pin, Lynch	1

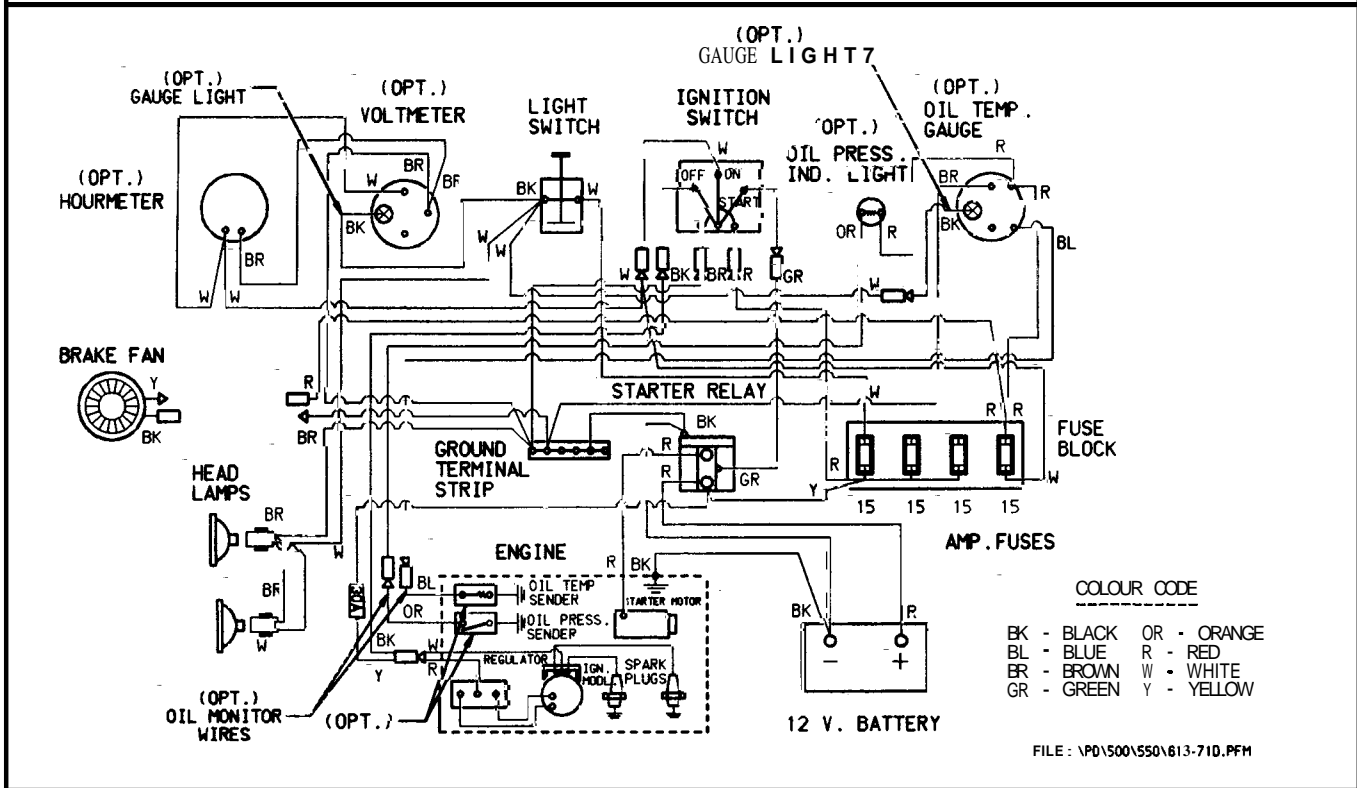
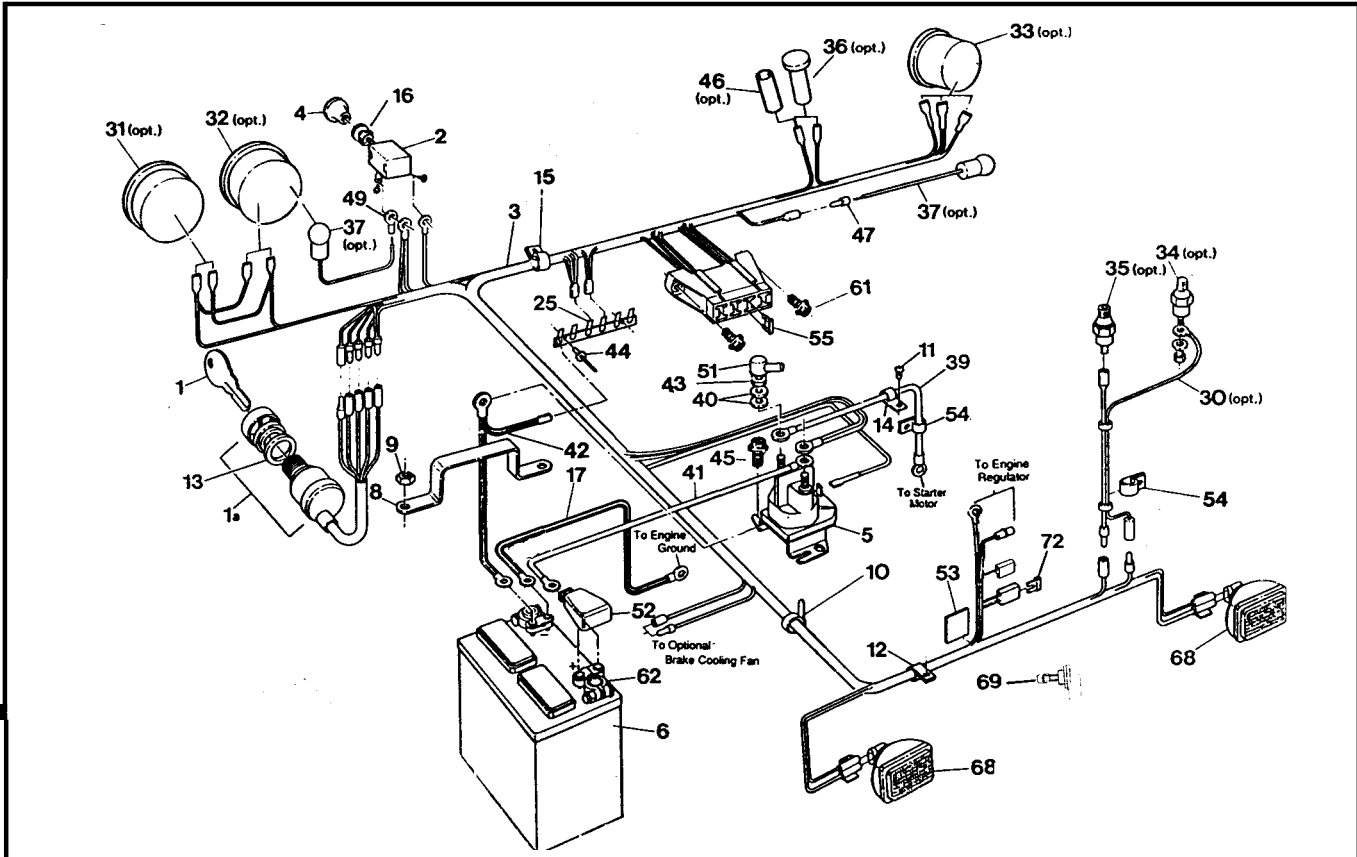


Ref	Part No.	Description	Qty	Ref	Part No.	Description	Qty
1	804-90	Frame Assem.	1	26	112-03	SHSS 5/16-18x3/8 1/2 DOG PL	10
2	605-69	Gasket - GRC-36 Mat'l	2	27	803-17	Chain, Idler RC50-2 x 40P	2
3	117-15	Nut, Fin Hex 3/8-16 Zinc	80	28	117-64	Insert , 1/4-20	4
4	108-46	Washer 13/32x1.375x.12 Hi-Car	16	29	112-31	HHCS 3/8-16x1.0 2B GR8	8
5	101-35	Bearing, Ball #1030-1.1/4 GFS	12	30	112-14	HHCS 3/8-16x.750 GR5 Zc	2
5a	101-41	Bearing, Ball #1030-1 GFS	8	31	108-15	Washer 3/8 SAE Zinc	1
6	108-06	Lockwasher, 3/8" S/R, Zinc	82	32	103-82	HHCS 3/8-16x1.5 GR5 Zc	2
7	103-88	C. Bolt, 3/8-16x1.00 GR5 Zc	30	43	603-17	Chain, RC50-2 x 42P - Front	2
8	605-99	Gasket, Flange	12	44	603-20	Chain, RC50-2 x 70P - Mid	2
9	605-89	Gasket, Outer Bearing Flnge	14	45	603-21	Chain, RC50-2 x 96P - Rear (Refs 27, 43, 44 & 45 incl. Ref. 53)	4
10a	605-63	Flange, Bearing - Outer	18	46	117-35	Nut, Wheel 7/16-20 - Zinc	1x8
10b	101-20	Flange Assem., Bearing	12	47	125-26	Valve, Tire - (see Ref. 48)	8
11	102-14	Seal, Oil CR #12361	8	48	125-15C	Rim, Char. 8x7-5 Bolt (incl. Ref 47)	8
12	102-15	Seal, Oil CR #12379	8	49	126-96	Tire, Goodyear Runamuk 22x10-8, (see Refs 50 & 51)	8
13	605-97	Flange Assem, Outer (incl. Refs. 11 & 12)	8	50	126-98C	Tire & Rim Assem. - LH (incl. Refs 47, 48 & 49)	4
14	112-39	C. Bolt, 3/8-16 x 1-3/4"	24	51	126-97C	Tire & Rim Assem. - RH (incl. Refs 47, 48 & 49)	4
15	103-67	C. Bolt, 3/8-16 x 6" GR2 Zc	8	53	100-96	Con. Link, RC50-2 H.D.	1x 10
16	810-36	Bearing Extension (uses Refs. 17 & 18)	2	55	125-61	Spring, Tensioner	x6
17	108-34	Washer, 7/16" SAE Zinc	12	56	603-61	Slider Block	x6
18	103-81	HHCS, 7/16-20x2.5" GR5 Zc	12	57	125-78	Spring, Spacer	x6
19	103-80	Stud, Wheel 7/16-20 x 1.125 #B271, (see Refs. 20,21)	1x8	58	603-77	Arm , Chain Tensioner - Upr	x6
20	810-73	Axle Assembly - Front/Rear (incl. Ref. 19)	2	59	603-76	Arm , Chain Tensioner - Lwr	x6
21	810-75	Axle Assembly - Mid (incl. Ref. 19)	6	60	100-01	Pin, Cotter 1/8 x 1.50 Zinc	x6
22	810-45	Shaft, Idler - 11T	2	61	603-78	Pin, Pivot	x6
23	604-84	Frame Assem., Battery	1	62	603-66	Spacer, .500 ID x .625 LG	x6
24	810-28	Sprocket, Double - 24T	6	63	647-10	Chain Take-Up Replacement Kit (incl. Refs. 55 thru 62 as shown)	6
25	810-29	Sprocket, M/R Axle - 19T	8				



Response Parts Manual 8.0 Fuel System and Seat Assembly

Ref	Part No	Description	Qty	Ref	Part No.	Description	Qty
1	803-50	Handrail Assembly	1	21	608-42	Fuel Hose, 110"	1
2	108-03	Lockwasher, Split Ring 1/4"	4	22	125-64	Fuel Filter, G 81-4	1
3	112-41	PHMS, PHIL 1/4-20x1.250Zc.	6	23	100-12	Clamp, Gear 2.25" HF36	2
4	608-39	Back Pad Assembly	1	24	125-94	Hose, Filler	1
5	608-43	Seat. Bench	1	25	126-47	Fuel Neck Assembly	1
6	608-3C	Angle, Left	1	26	126-46	Cap, Fuel	1
7	608-31	Angle, Right	1	27	127-21	Hose, Vent 86"	1
9	112-04	HHCS 1/4-20x 3/4 GR2 ZN	6	28	126-50	Male Connector, 1/4"	1
10	108-03	Lockwasher 1/4-20x 1/4 Split Ring Zf	6	29	126-94	Clamp, Nylon Wire, 1/4"ID	5
13	804-17	Frame Assembly, Seat	1	30	112-04	HHCS 1/4-20x3/4 Gr 2 Zinc	4
16	120-04	Washer, .195IDx.500Dx.08Z	2	31	117-10	Locknut, Nylon #10-24 Zinc	12
17	608-32	Tool Box	1	32	126-62	Clamp, Gear 1/4 2-Ear #050Z	1
18	608-28	Pickup Assembly, Fuel (See Ref. 19)	1	33	126-93	Clamp, Nylon Wire, 1/2" ID	4
19	608-24	Tank, Fuel 32 litre (incl. Ref. 18)	1	34	108-08	Washer, .28x.62x.04 Zinc	4
20	100-70	Clamp, Gear 1/2" HF4	4	35	120-09	Rivet, 3/16 x 1	3
				36	120-13	Rivet, 3/16x5/8	5
				37	702-06	Foam Cushion	4
				38	117-54	Locking PAL Nut, 1/2-20Zc	1
				39	112-07	RHMS, 10-24x 1.25 Zinc	12
				40	108-42	Washer, .062x7/32x1.00 Zc	12
				41	103-48	T/S PAN HD PHIL #10x5/8 A Zc	1



FILE: \PD\500\550\613-71D.PFM

Ref	Part No.	Description	Qty	Ref	Part No.	Description	Qty
1	100-39A	Key	1	41	613-26	Power Cable	
1a	126-17	Ignition	1	42	613-58	Ground Wire	
2	100-62	Switch, Light	1	43	117-20	Nut, Fin. Hex, 1/4-20Zinc	
3			1	44	120-15	Rivet, 1/8x7/16	
4			1	45	112-19	Screw, IHWH.T/C 1/4-20 x1/2	
5	613-68	Starter Relay	1	46	118-48	Heat Shrink, 2 x 1/2 (opt.)	1
6	127-54	Battery	1	47	118-02	Terminal, Male-#76-1251-88	1
8	604-52	Battery Retaining Bracket	1	49	118-30	Terminal, Eye - #10	1
9	117-21	Locknut, Nylon 5/16-18 Zinc	2	51	613-45	Terminal Insulator (6 ga.)	1
10	100-64	Tie Wrap, 5.5" - Black	8	52			1
11	103-48	Pan HD PHIL T/S #10x5/8 A Zinc	1	53			2
12	126-93	Clamp, Nylon Wire - 1/2" ID	10	54	126-83	Clip, Hose 5/16 I.D. #C-950PC	2
13	108-57	Washer, 3/4" ID, Tooth Lock	1	55	118-49	Fuse, 15 Amp, 2-prong (AT015)	4
14	126-93	Clamp, Nylon Wire - 1/2" ID	1	61	112-51	Screw, IHWH T/C #10-24x5/8	2
15	127-24	Clamp, Nylon - 1" ID	1	62			2
16	108-55	Lockwasher, Ext. Tooth 7/16	1	68	613-69	Headlamp, Halogen incl. reference #69	2
17	613-18	Ground Wire	1	69	127-46	Bulb, Headlight Halogen	2
25			1	72	118-51	Fuse, 30A 2-prong (AT030)	1
26			1				
27			1				
30			1				
31	632-15	Hourmeter, #56548-10 (#876EM) (opt.)	1				
32	633-10	Voltmeter, #07583-15 (#830EM) (opt.)	1				
33	634-11	Oil Temp. Gauge #07556-88 (#828EM) (opt.)	1				
34	634-12	Oil Temp. Sender #02024-0C (opt.)	1				
35	52.099.06	Oil Pressure Switch, 6 psi (opt.) (Kohler #)	1				
36	634-08	Engine Oil Pressure Light (opt.)	1				
37	634-10	Light Kit, #06215-00 5/8" dia., see Ref. 32,33 (opt)	2				
39	613-49	Cable Starter	1				
40	108-03	Lockwasher, 1/4 Zinc	5				

ARGO Products Manufactured by:

Ontario Drive & Gear Limited

P.O. Box 280, Bleams Road

New Hamburg, Ontario

CANADA NOB 2G0

Phone: (519) 662-2840

Fax: (519) 662-2421

ODG *Dedicated to quality and performance*