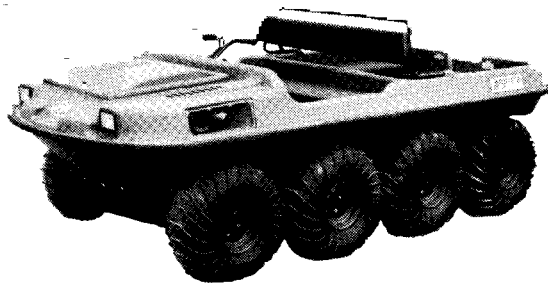


**Argo 8x8**  
*RESPONSE*



**ARGO**

**RESPONSE PARTS  
MANUAL**

**Model No. V896-65**  
**From Serial #RB1 2075**

# Foreword

**ODG** has prepared this parts manual for the **RESPONSE** model to assist both qualified mechanics and vehicle owners in ordering correct, quality replacement **ARGO** parts.

Proper and regular service, and replacing old, worn or broken parts with the correct **ARGO** replacement parts, are both essential to prolonging the life of the **ARGO**. Please refer to this parts manual before ordering any replacement part.

All information contained in this **RESPONSE** Parts Manual is based on the latest product specification available at time of printing. If your **RESPONSE** differs from the specifications contained in this manual, **contact Ontario Drive & Gear Limited for information.**

**ODG** reserves the right to alter specifications on the **RESPONSE** model at any time, without obligation or prior notification.

Reproduction of the **RESPONSE** Parts Manual No. 896-65, in whole or in part, is prohibited without prior written permission from **Ontario Drive & Gear Limited.**

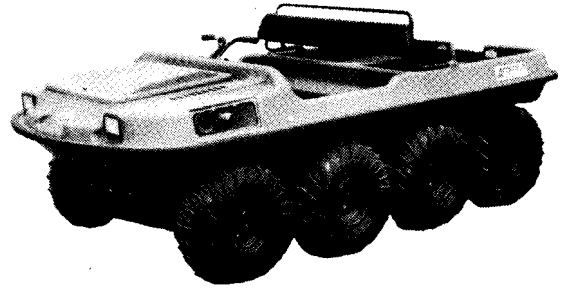
## Model Identification

**RESPONSE - Model No. V896-65**

## Explanation of Parts Manual Format

- Ref** - Reference Number between Assembly Diagram and Component Parts List
- Part No.** - Argo replacement part number for identification and re-ordering
- Description** - Part Description for identification and re-ordering
- Qty** - Indicates the quantity of a part used in an Assembly

# Argo 8x8 RESPONSE

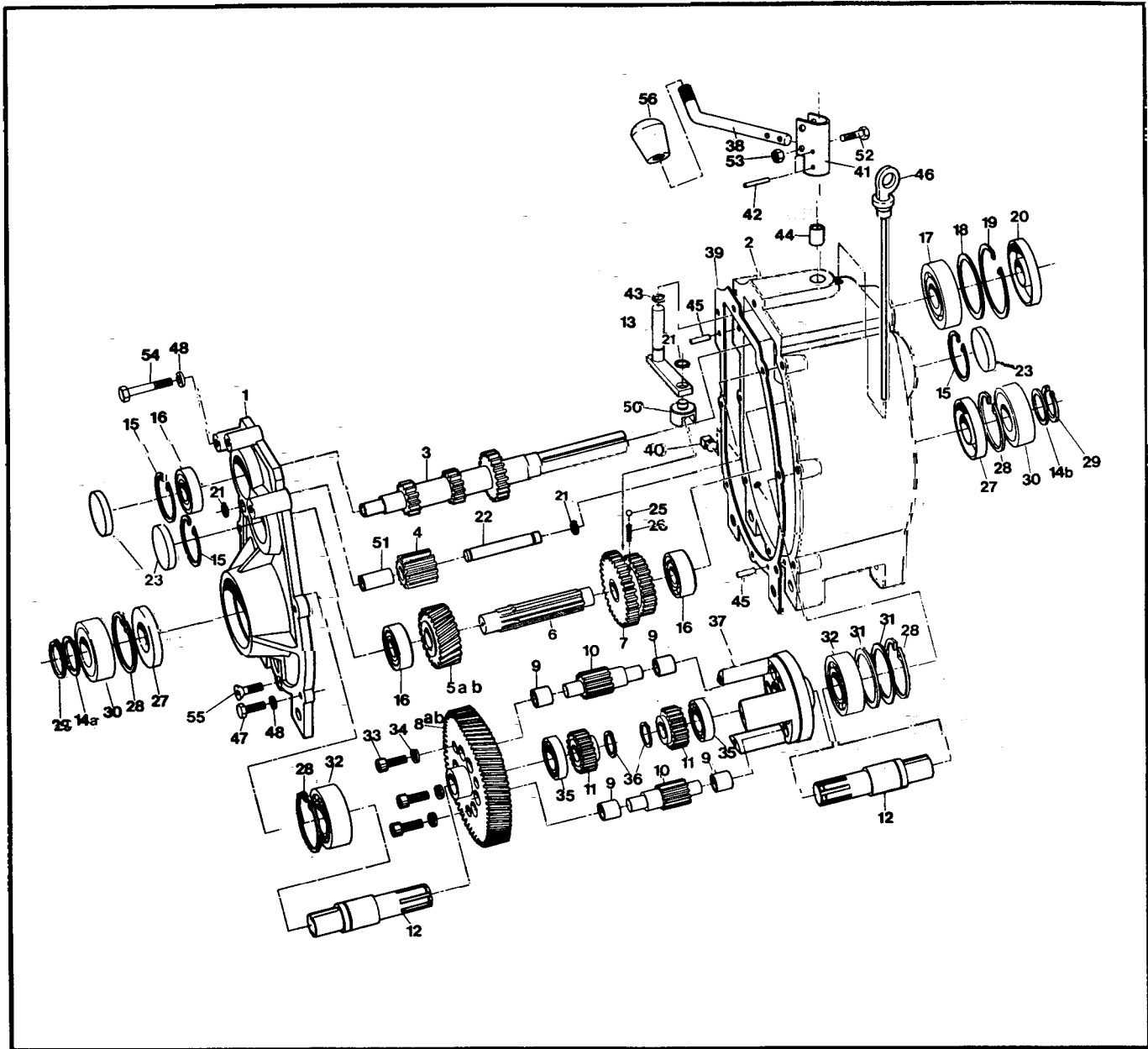


## Using the Parts Manual

1. Find the major vehicle assembly in the Table of Contents on this page, and turn to that section.
2. Locate the part in the illustration that you wish to order.
3. Refer to the parts list in that section.
4. Find the correct part number (Part No.), part description (Description) and correct quantity (Qty).
5. Use only this information to order ARGO replacement parts. DO NOT attempt to order a replacement part by Ref number or Page number.

## Table of Contents

Foreword.....	i
Model Identification.....	.i
Using the Parts Manual.....	ii
<b>1.0 Transmission.....</b>	<b>1</b>
<b>2.0 Intake and Exhaust System.....</b>	<b>3</b>
<b>3.0 Clutch System.....</b>	<b>3</b>
<b>4.0 Power Pack Assembly.....</b>	<b>5</b>
<b>5.0 Brake System.....</b>	<b>7</b>
<b>6.0 Vehicle Body &amp; Firewall.....</b>	<b>9</b>
<b>7.0 Frame &amp; Drive System.....</b>	<b>11</b>
<b>8.0 Fuel System &amp; Seat Assembly.....</b>	<b>13</b>
<b>9.0 Electrical System.....</b>	<b>.15</b>



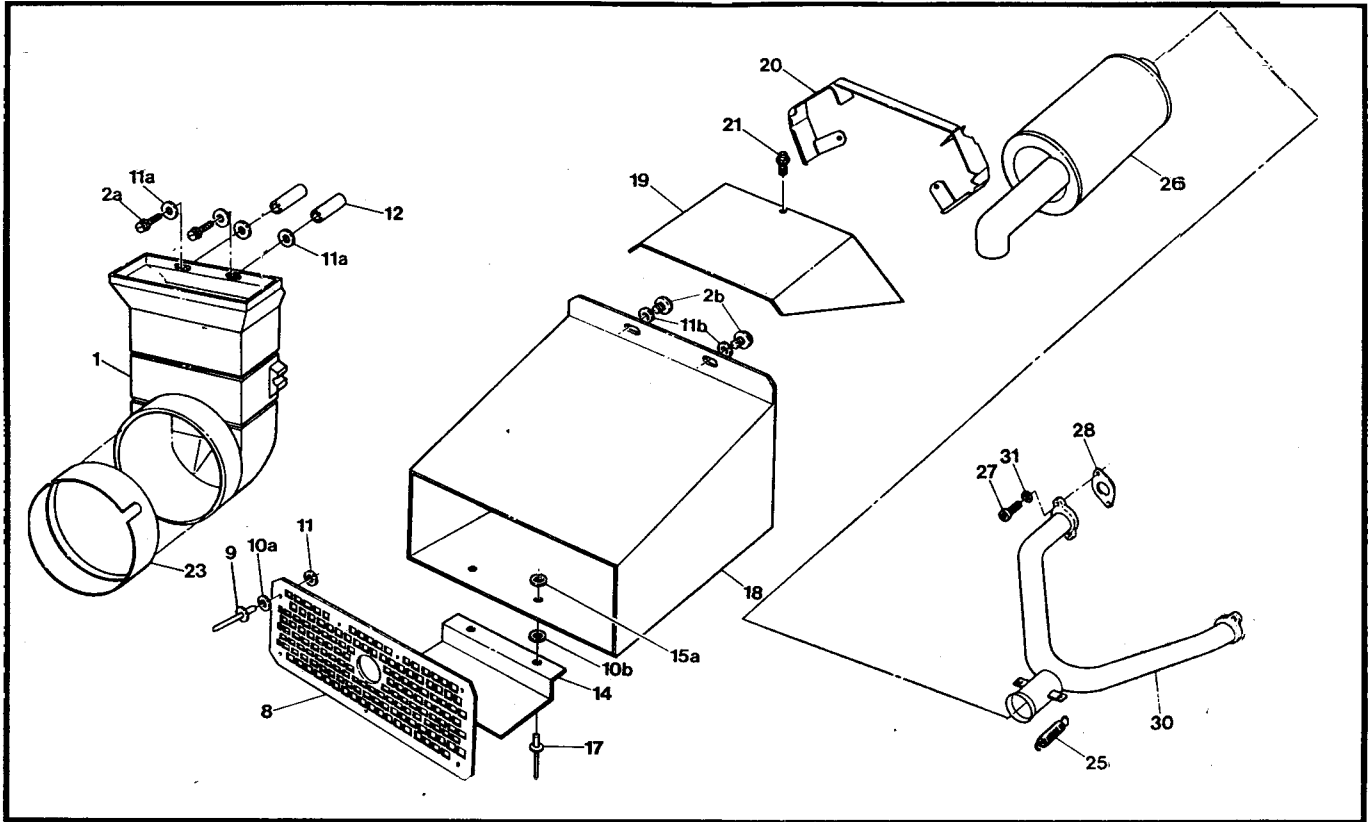
# Response Parts Manual

# 1.0 Transmission

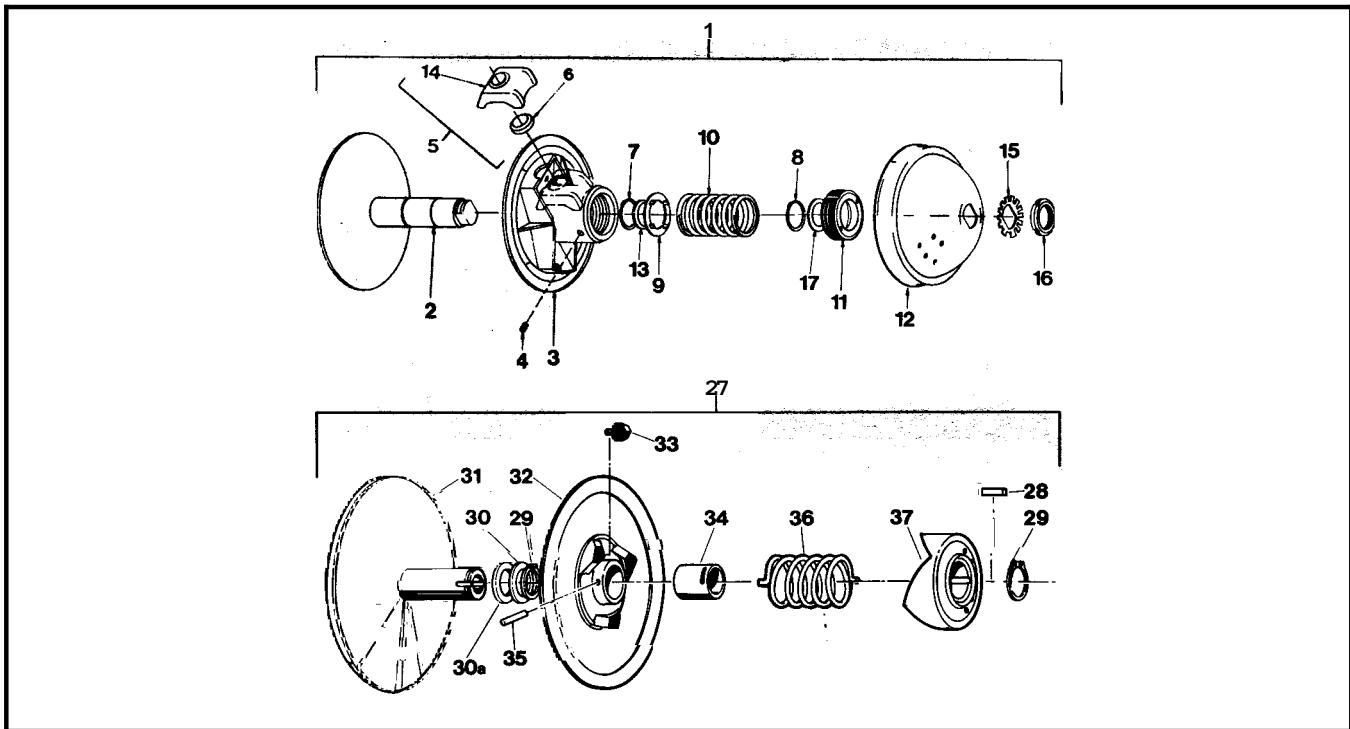
Ref	Part No.	Description	Qty	Ref	Part No.	Description	Qty
	10-17MU	<b>Transmission Asm - MU,</b> does not include Refs 38, 52, 53 & 56 <b>uses Refs 5a &amp; 8a</b>		26	34-32	Spring, Compression - 7/32 x .50	1
	510-17GU	<b>Transmission Asm - GU,</b> does not include Refs 38, 52, 53, & 56 <b>uses Refs 5b &amp; 8b</b>		27	102-03	Seal, Oil WBS 30x72x10	2
1	34-68	Cover, Transmission	1	28	106-03	Retaining Ring #5000-281PA	4
2	34-99	Housing, Transmission	1	29	107-02	Retaining Ring N1400-118	2
3	34-21	Shaft, Input - 13/21 T	1	30	101-05	Bearing, -Ball 6306-2NSE C	2
4	34-16A	Gear Idler - 13T (incl. Ref 51)	1	31	114-01	Washer, Shim .020x2.25x2.81	2
5a	34-95	Gear, Helical - 24T (MU)	1	32	101-03	Bearing, Ball 6207-C 3	2
5b	34-97	Gear, Helical - 21T (GU)	1	33	103-04	SHCS, 5/16-18 x 1.00 PL	3
6	34-94	Shaft, Splined	1	34	108-02	Lockwasher, Hi-Collar 5/16, PL	3
7	34-91	Gear, Double - 26/33 T	1	35	101-15	Bearing, Ball 6005-C 3	2
8a	34-22	Gear Plate - 73T (M)	1	36	107-04	Retaining Ring N1400-98	2
8b	34-45	Gear Plate - 76T (G)	1	37	34-08	Cage	1
9	105-03	Bushing, Oilite -AA650	12	38	610-67	Shift Lever Rod	1
10	34-13	Gear, Planet -12 T	6	39	34-47	Gasket, Cover - 1/64"Thk	1
11	34-14	Gear, Sun - 21 T	2	40	103-02	Plug, Magnetic 3/8-18 NPT	1
12	34-81	shaft, output	2	41	34-86	Holder, Shift Lever	1
13	34-65	Shifter Assem.	1	42	111-01	Pin, Spirol 5/32 x 1.00	2
14a	114-04	Washer, Shim .040 Thk	1	42	113-01	O-Ring 012-7147	1
14b	114-05	Washer, Shim .020 Thk	1	44	105-02	Bushing, Oilite - AA628	1
15	106-01	Retaining Ring #5000-187PA	3	45	104-03	Pin, Dowel 1/4" x 7/8" long	2
16	101-01	Bearing, Ball 62042-C 3	3	46			1
17	101-16	Bearing, Ball 6206-C3	1	4i	103-06	HHCS 5/16-18x1.00 GR5 Zinc	4
18	114-02	Washer, Shim 2.062	1	48	108-05	Lockwasher 5/16 Zinc	7
19	106-05	Retaining Ring N1300-244	1	50	34-63	Shift Yoke	1
2c	102-05	Seal, Oil WBS 30x62x 10	1	51	105-05	Bushing, Oilite - AA650-3 (in Ref.4)	1
21	107-05	Retaining Ring N1400-50	3	52	103-97	HHCS 1/4-20x1.25 GR5 Zinc	1
22	34-11	Pin, Dowel 1/2x 3.50	1	53	117-27	Locknut, Nylon 1/4-20Zinc	1
23	31-07	Plug plate	3	54		<b>See Section 4.0</b>	
25	109-05	Ball, Steel 6mm 62-67 Rc	1	55	103-95	FHSC 5/16-18x1.0 GR8 Zinc	1
				56	126-38	Knob, Shift	1

## 2.0 Intake and Exhaust System

## Response Parts Manual



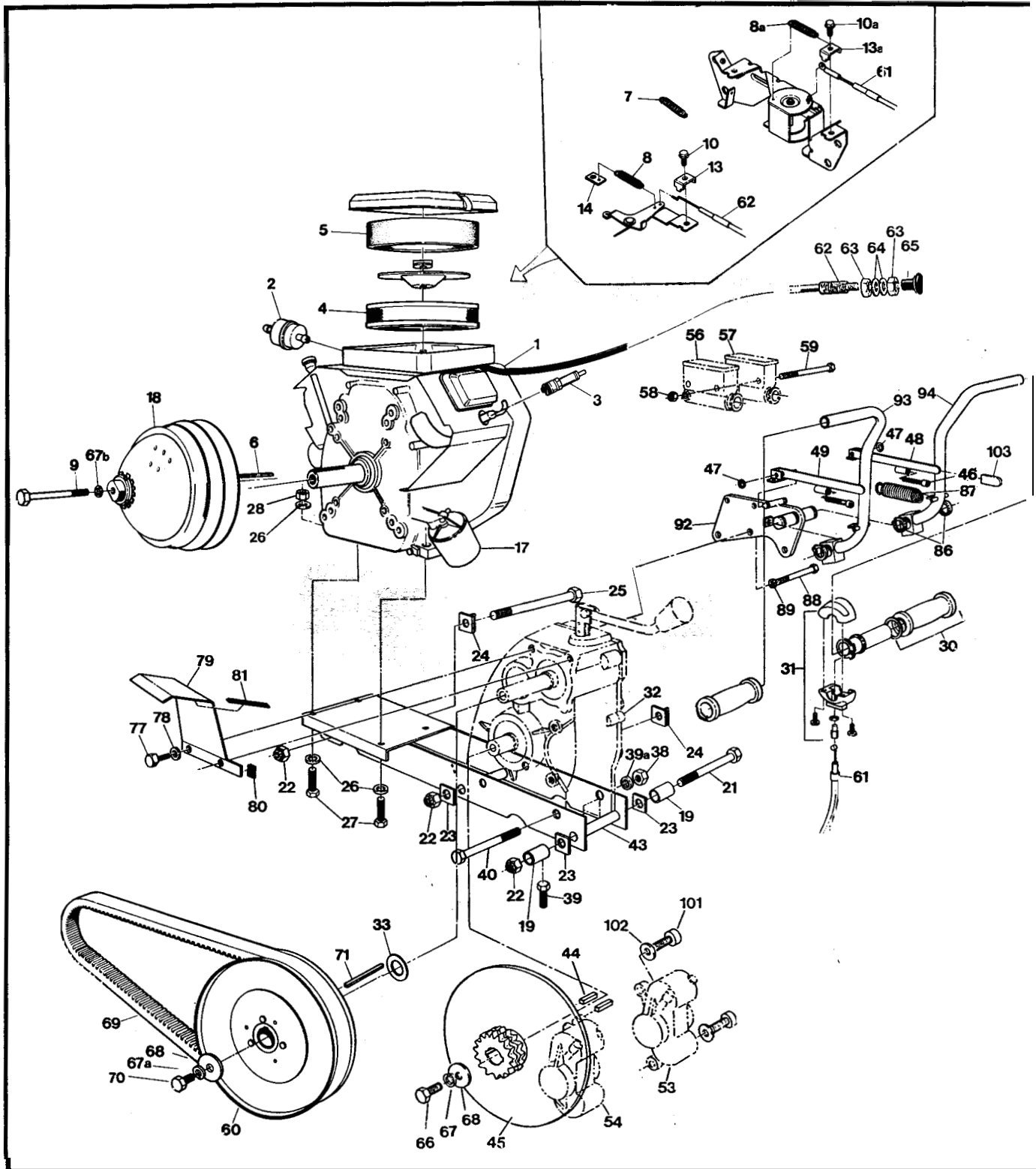
## 3.0 Clutch System



Ref	Part No.	Description	Qty	Ref	Part No.	Description	Qty
1	603-81	Duct, Intake	1	15a	120-05	Washer, .195x.50x.04 Zinc	2
2a	112-48	Screw, T/S HH #14x2.25 ZN	2	17	120-13	Rivet - 3/16 x 5/8	2
2b	112-19	Screw, IHWHT/CSlot 1/4-20x0	2	18	707-32	Duct, Exhaust - Response	1
8	707-31	Screen, Exhaust - Response	1	19	707-26	Cover, Engine Duct	1
9	120-09	Rivet 3/16 x 1	7	20	707-25	Duct, Engine	1
10a	125-59	Washer, Fibre - .062x.25x.50	7	21	103-11	Screw, IHWHT Slot 1/4-20x.50 ZN	3
10b	125-58	Washer, Fibre - W-77F	2	23	603-82	Seal	1
11	120-05	Washer, .195x.50x.040 Zinc	7	25	126-57	Spring, Exhaust	2
11a	108-08	Washer, 1/4 SAE Zinc	4	26	707-15	Muffler	1
11b	108-08		2	27	112-30	SHCS, M8x1.25x20.0 Zinc	4
12	120-29	Spacer, .26 IDx1.12 LG	2	28	805024	Gasket	2
14	707-28	Support, Exhaust Duct	1	30	707-05	Manifold, Exhaust	1
				31	108-02	Lockwasher, Hi-Collar 5/16, PL	4

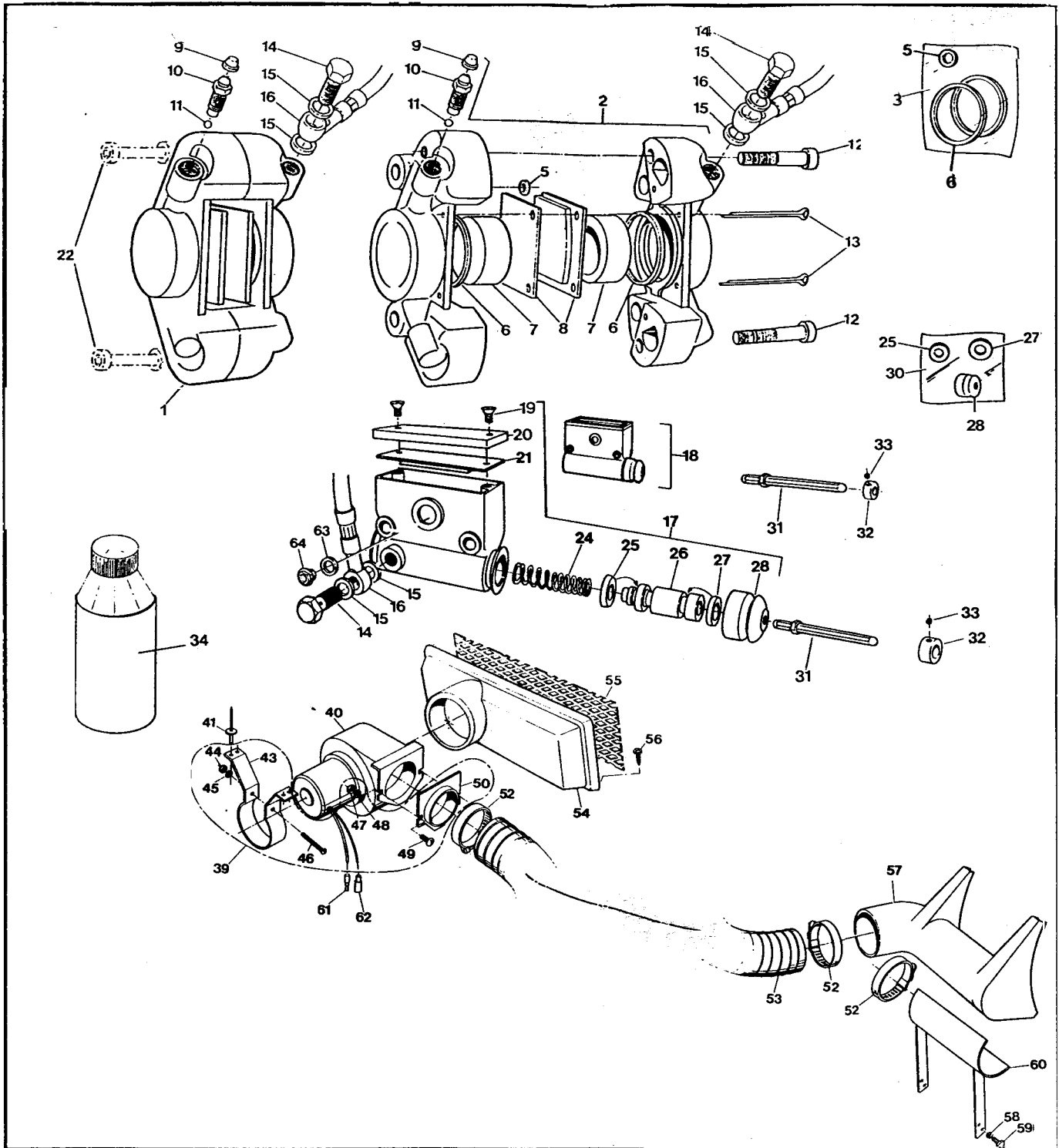
3.0 Clutch System

Ref	Part No.	Description	Qty	Ref	Part No.	Description	Qty
1	127-43	Clutch, Driver, keyed incl. Refs 2 to 17, PO DB0006	1	27	126-24	Clutch, Driven Model "B" SOD B0001	1
2	V01L41F	Pulley, Half - Fixed	1			incl. Refs 28 to 37	
3	V021F	Pulley, Half - Sliding	1	28	ASK-5	Key 1/4x1/4x3/4	1
4	V046	Lock Screw (use Loctite 242)	1	29	ASR-6	Retaining Ring N1400-150	2
5	V05BCR-225	Block + 225g Lead Slug Asn	3	30	ASA-1	Spacer .050" Thick	as req
6	C13-225	Slug, Lead 225 g	3	30a	ASA-1-S	Spacer .025" Thick	as req
7	V08	Retaining Ring D1400-350	1	31	AFK25.4-250OD01	Pulley, Half - Fixed	1
8	V08C	Retaining Ring N1408-137	1	32	CMC-2-250OD01	Pulley, Half - Sliding incl. Refs. 34 and 35	1
9	V09	Spring Guide Plate	1	33	ANS-2-T	Shoe, Cam	3
10	V10-48-108-18	Spring, Blue	1	34	AMB-2	Bushing, Bronze	1
11	V111	Threaded Cap	1	35	CCP-2-156	Pin, Spirol	1
12	V1203AR	Cap, Type "A"	1	36	ACS-3-188	Spring, Blue	1
13	x-35	Spacer	as req	37	AFC-4-C3D4	cam	1
14	V05BMR	Block, Red	3				
15	V15	Lockwasher	1				
16	V16	Locknut	1				
17	X-35	Spacer	as req				



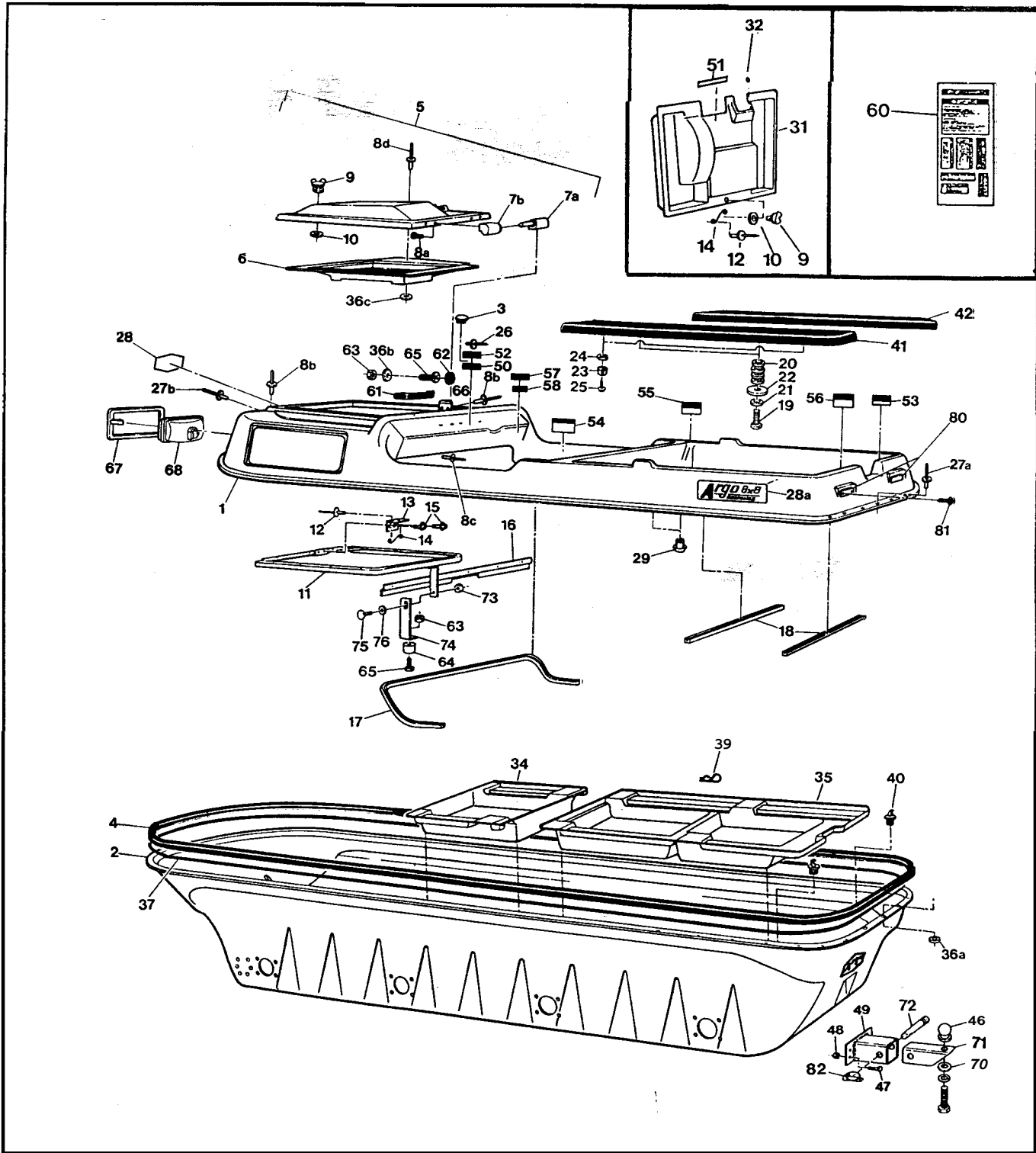


Ref	Part No.	Description	Qty	Ref	Part No.	Description	Qty
1	127-40	Engine - Vanguard 18HP incl. refs 2-14, 17	1	43	611-66	Frame-Power Pack	1
2		See <b>Section 8.0 Fuel System &amp; Seat Assembly</b>		44	110-14	Key 1/4x1/4x 1.25	4
3	126-74	Spark Plug #3926	2	45	810-01	Brake Disc-#50-2x13T	2
4	394018	Cartridge - Air Cleaner (BS#)	1	46	103-69	SHCS 1/4-20x1.50 Zinc	2
5	271271	Element - <del>Air</del> Cleaner (BS#)	1	47	113-02	O-Ring #106-7147	2
6	110-03	Key 1/4x3/16x2.375 RC46	1	48	810-20	Lever Assem., Brake - RH	1
7	127-31	Spring, Governor - Green	1	49	810-21	Lever Assem., Brake - LH	1
8	125-88	Spring, Return	1	53 to		See <b>Section 5.0 Brake System</b>	
8a	125-88	Spring, Return	1	57			
9	112-28	HHCS, 3/8-24x4.5 GR5 Zinc	1	58	117-27	Locknut, Nylon 1/4-20Zinc	2
10	805169	Screw-Hex Head (BS #)	1	59	103-66	HHCS 1/4-20x4.00 Gr5 Zinc	2
10a	805169	Screw-Hex Head (BS #)	1	60		See <b>Section 3.0 Clutch System</b>	
13	805170	Clamp - Casing (BS#)	1	61	612-93	Cable Asm, Throttle	1
13a			1	62	612-92	Cable Asm, Choke incl. 63	1
14	601-86	Clip, Retainer	1	63		Jam Nut, 5/16-24, Part of 62	2
17	126-95	Filter, Oil	1	64	108-24	Washer 5/16 SAE Zinc	2
18		See <b>Section 3.0 Clutch</b>		65	126-75	Knob, Choke - Black	1
19	811-14	Spacer	2	66	103-18	HHCS 3/8-24x1.25 GR5Zinc	2
21	103-37	HHCS 5/8-18x10.00 Gr5 Zc	1	67	108-06	Lockwasher, 3/8 S/R, Zinc	2
22	117-56	Locknut, Nylon 5/8-18 Zinc	3	67a	108-06	Lockwasher, 3/8 S/R, Zinc	1
23	811-09	Washer, Square .64ID	3	67b	108-06	Lockwasher, 3/8 S/R, Zinc	1
24	811-10	Washer Asm, Square	2	68	108-18	Washer 13/32x1.375x11GA	3
25	103-52	HHCS 5/8-18x7.50 Gr5 Zc	2	69	125-56	Drive Belt	1
26	108-24	Washer 5/16 SAE Zinc	8	70	103-34	HHCS 3/8-16x1.25 GR5Zinc	1
27	112-27	HHCS 5/16-18x1.75 GR5ZN	4	71	110-09	Key 1/4x1/4x3.0	1
28	117-21	Locknut, Nylon 5/16-18 Zinc	4	77	103-17	HHCS 3/8-16x1.00 GR5Zinc	2
30	127-35	Grips, Molded Set	1	78	108-26	Washer 3/8 Zinc	2
31	100-57	Throttle Twist Grip	1	79	603-29	Guard, Belt Protect	1
32		See <b>Section 1.0 Transmission</b>		80	601-92	Vinyl Trim, 1.5"	1
33	108-36	Washer .06x1.00x1.375 Zinc	as req	81	601-93	Vinyl Trim - 4.25"	1
38	117-06	Nut, Fin Hex 1/2-13Zinc	2	86	106-07	Retaining Ring N1400-75	4
39	103-53	HHCS 3/8-16~3.0ull Thread	2	87	127-33	Spring, Extension - Strg Lever	2
39a	108-07	Lockwasher 1/2 Zinc	2	88	103-55	HHCS 5/16-18x2.75 Gr5 Zc	3
40	103-20	HHCS 1/2-13x6.50 GR5Zinc	2	89	108-05	Lockwasher 5/16 Zinc	3
				92	850-61	Bracket Asm, Steering	1
				93	812-19	Lever Asm, Steering - LH	1
				94	812-18	Lever Asm, Steering - RH	1
				101	103-41	SHCS, 3/8-16x1.25 Zinc	4
				102	108-23	Washer 3/8 SAE Gr8 - Dich.	4
				103	125-89	Cap, Vinyl - Black	2

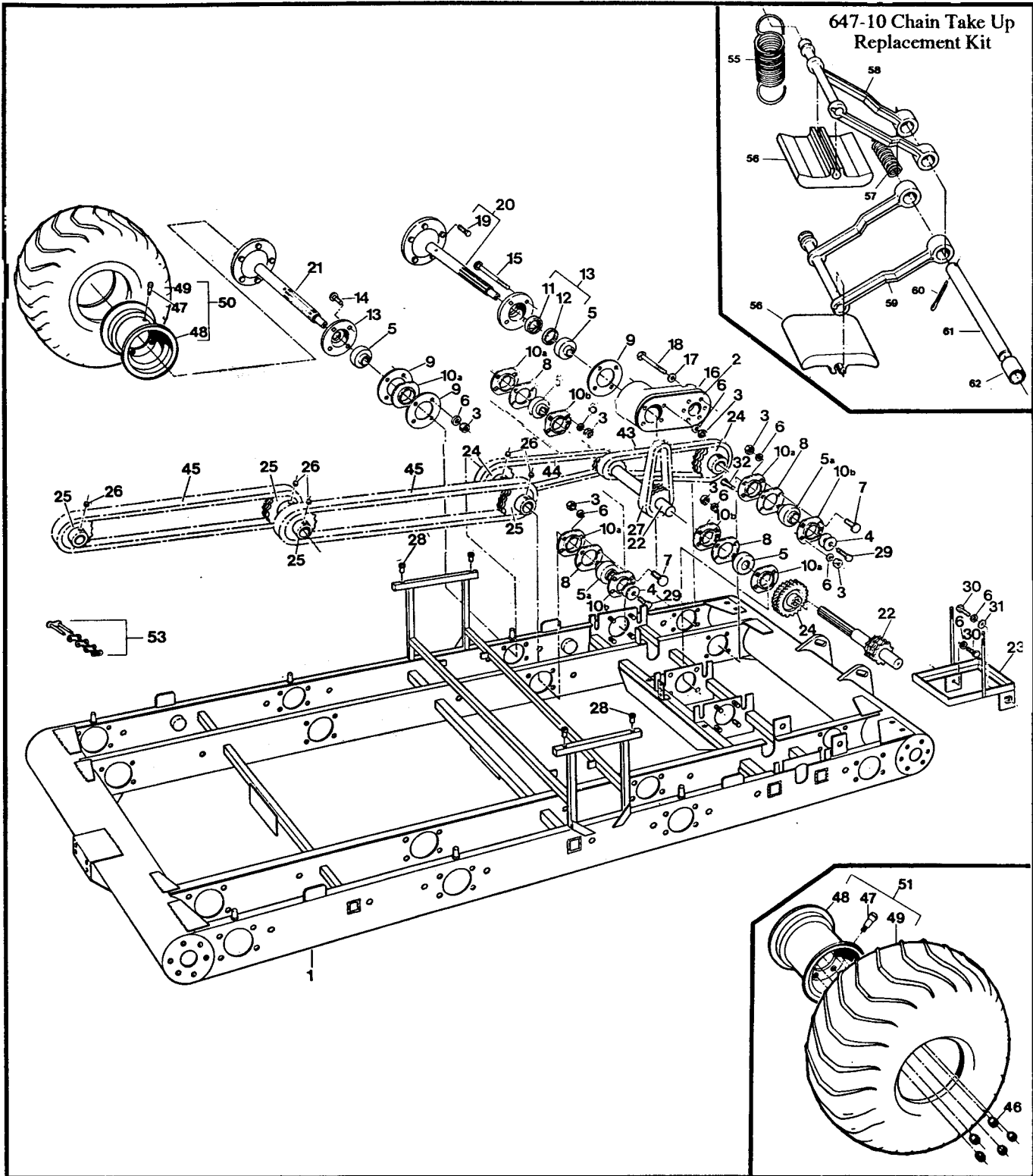


?--

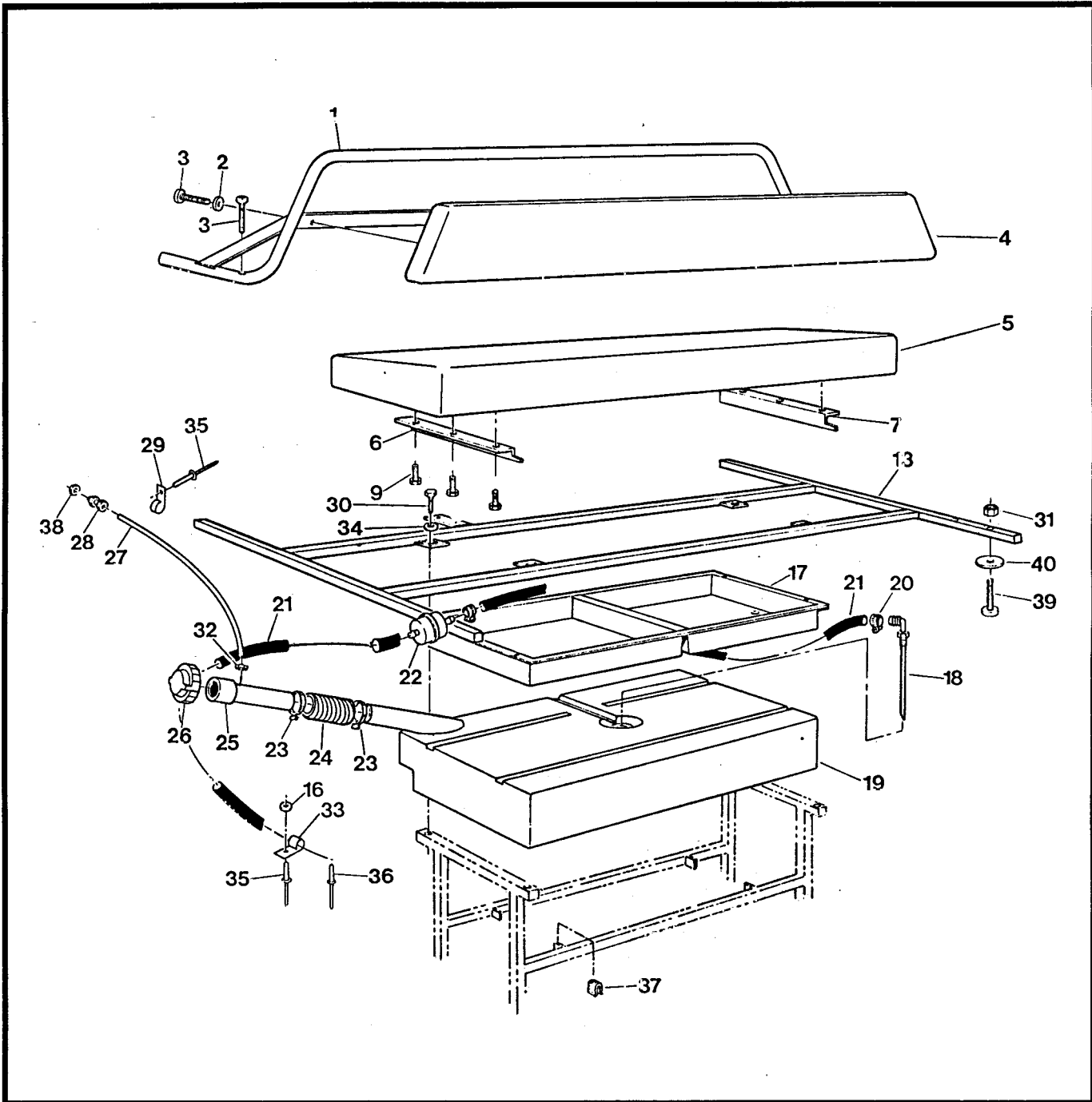
Ref	Part No.	Description	Qty	Ref	Part No.	Description	Qty
1	166-05	Caliper Asm, Brake - L (incl. Refs 5 to 13)	1	39	125-92	Adpt. & Mounting Kit (incl. Refs 43 to 50)	
2	166-06	Caliper Asm, Brake - R (incl. Refs 5 to 13)	1	40	125-91	Blower Fan	1
3	161-01	O-Ring Kit, Caliper (incl. Refs 5 & 6)	2	41	120-13	Rivet 3/16"x5/8	4
5		Seal, Rubber-5mm (see Ref 3)	1	43		Mounting Bracket	1
6		Seal, Piston-41mm (see Ref 3)	2	44		Nut, #10-32	1
7	168-05	Piston 41mm	2x2	45	See	Lockwasher, 3/16"	1
8	170-02	Brake Pad Set(4)-Non-asbestos	1	46	125-92	Screw, #10-32 x 2"	1
9	168-20	Plug, Rubber	1x2	47	above	Nut, 1/4-20	2
10	168-03	Screw, Bleeding M10x1.0	1x2	48		Lockwasher, 1/4"	2
11	168-04	Ball, Check - 7/32 Dia.	1x2	49		Screw, 1/4-20 x 5/8"	2
12	160-41	SHCS M10x1.5x50mm Zinc	2x2	50		Adaptor, 3" dia.	1
13	168-06	Pin, Cotter M3.2x50mm	2x2	52	125-35	Clamp, Gear 3.50" HF-52	3
14	160-44	Bolt, Banjo-M10x1.0x 21.0 Zinc	4	53	127-44	Hose, Intake 3" dia. x 46"	1
15	160-01	Washer, Copper - 1.5x10.0x 14.0	8	54	601-89	Intake Flange (specify clr)	1
16	163-01	Hose Asm,Hydraulic-300mm	1x2	55	126-61	Intake Screen	1
17	165-06	Master Cylinder, (incl. Refs 19 to 21, 24 to 28, 63 & 64)	1	56	103-48	Pan HD Phil T/S #10x5/8 AB Zinc	4
18	165-05	Master Cylinder, (incl. Refs 19 to 21, 24 to 28, 63 & 64)	1	57	127-39	Brake Cool Air Duct	1
19	160-42	FHMS M5x0.8x6mm	2x2	58	108-03	Lockwasher 1/4 Split Ring	2
20	168-08	Cover	1x2	59	112-19	Screw, IHWH T/C Slot 1/4-20x1/2	2
21	168-09	Cover, Rubber	1x2	60	668-11	Mounting Bracket - Duct	1
22		See Section 4.0 Power Pack Assembly		61	118-02	Terminal, Male-#76-1251	1
24	162-02	Spring, Return	1x2	62	118-03	Terminal, Female - #76-1289	1
25		Seal, Primary, 19mm (See Ref. 30)	1x2	63	160-03	O-ring, Oil Window	1x2
26	168-10	Piston 19mm dia.	1x2	64	168-14	Oil Window, Master Cylinder	1x2
27		Seal, Secondary, 19mm (See Ref. 30)	1x2				
28		Boot, Rubber, (See Ref. 30)	1x2				
30	161-25	O-Ring Kit-Master Cylinder (incl. Refs 25, 27 & 28)	1x2				
31	812-13	Pin Asm, Plunger-Adjustable	2				
32	812-17	Pin Stop	2				
33	112-02	SHSS 10-24x1/4 Cone PT,PL	4				
34	126-19	Fluid, Brake-Silicon Dot 5 - .35L					



Ref	Part No.	Description	Qty	Ref	Part No.	Description	Qty
1	801-44	Body + Hood, Upper-Response Replacement, specify colour (incl. Ref. 5, 11, 12, 13, 14, 15)	1	34	803-02	Floor Pan, Front specify colour	1
2	801-45	Body, Lower - Response, specify colour	1	35	803-03	Floor Pan, Rear specify colour	1
3	127-28	Plug, Nylon - Black	1	36a	120-04	Washer, .195IDx.50ODx.08 Zc	51
4	601-05	Bumper, Vinyl - 8x8	1	36b	120-05	Washer, .195x.50x.04 Zc	2
5	801-46	Hood Assem. - Response specify colour, (incl. 9 & 10)	1	36c	120-04	Washer, .195 IDx.50 ODx.08 Zc	5
6	801-47	Duct, Intake Transition - Response, specify colour	1	37	126-60	Vinyl Strip 1/2"x1/4"x37.5'	1
7a	127-4512	Pin, Hinge	2	39	100-16	Clip, Hitch Pin 1.625 Znc	6
7b	127-45B	Knuckle, Hinge	2	40	100-18	Plug, Drain 5/8" x 13/32"	2
8a	103-47	HHCS 10-24x 1/2	8	41	801-03	Seat, Rear LH - 8x8	1
8b	120-13	Rivet 3/16x5/8	20	42	801-02	Seat, Rear RH - 8x8	
8c	120-13	Rivet 3/16x5/8	5	46	100-61	Coupler Ball (c/w Bolt+Wshr)	
8d	120-09	Rivet 3/16x 1	5	47	103-61	HHCS 3/8-24x1.50 GR5 Zc	
9	126-10	Wing Stud	2	48	117-24	Locknut, Nylon 3/8-24 Zinc	
10	126-09	Grommet, Alum. #GH-7	2	49	616-16	Hitch Assembly	
11	602-24	Hood Support Assembly	1	50	126-72	Plate, Holding Brake	
12	120-15	Rivet, 1/8x7/16	4	51	126-65	Shifting Plate	
13	601-69	Spring Plate	1	52	127-26	Steering Lever Plate & Winch	
14	126-11	Spring	2	53	126-67	Floor Pan Plate	
15	112-19	Screw, IHWH T/C Slot 1/4-20x 0.5"	2	54	126-68	Operation Plate	
16	602-29	Brace, Dash	1	55	126-69	Fuel Plate	
17	601-08	Vinyl Trim, 8 4	1	56	126-70	Vehicle Capacity Plate	
18	601-09	Vinyl Trim, 28"	2	57		Vehicle ID Plate	
19	112-04	HHCS, 1/4-20x3/4" GR2 Zc	4	58		U.S. Plate, Non-U.S. Argos only	
20	108-25	Washer, Plate 1/4 Zinc	16	60	126-73	French Decals, inc. 51-58 available as set only	
21	108-03	Lockwasher, 1/4 Split Ring	4	61'	125-41	Dash Handle, incl. 62	
22	801-41	Washer, Seat	4	62		Plug cap, avail. only with 61	
23	126-79	Bumper, Plastic - Black	4	63	117-10	Locknut, Nylon #10-24 Zinc	
24	120-05	Washer .195x.50x.040 Zinc	4	64	126-88	Bumper, Rubber	
25	103-45	Screw, IHWH D+T #10-3/4" Zinc	4	65	103-25	PHMS #10-24x3/4" Zinc	
26	120-24	Rivet, Alum. 3/32x3/8 - all plates	24	66	602-38	Clip, Hood	
27a	120-09	Rivet, 3/16x1	51	67	613-70	Bezel, Headlamp	
27b	120-09	Rivet, 3/16x1	12	68		See Section 9.0 Electrical System	
28	601-44	Nameplate, "Argo"	1	69	601-16	Headlight Molding	2
28a	127-42	Nameplate, 8x8 Response	2	70	108-53	Washer, 3/4x1.5x.125 SAE	1
29	117-44	T-Nut 1/4-20PL	4	71	616-19	Tube, Hitch - Insert	1
31	609-33	Firewall	1	72	104-13	Pin, Top Link	1
32	125-84	Grommet, Rubber	1	73	117-15	Nut, Fin. Hex 3/8-16 Zinc	1
				74	602-27	Support, Adjustable	1
				75	103-89	C/Bolt 3/8-16x.75 Gr2 Zinc	1
				76	108-06	Lockwasher, 3/8 S/R, Zinc	1
				80	127-01	Reflector, Red	2
				81	103-48	Pan HD PHIL T/S #10x5/8 AB Zinc	4
				82	104-11	Pin, Lynch	1



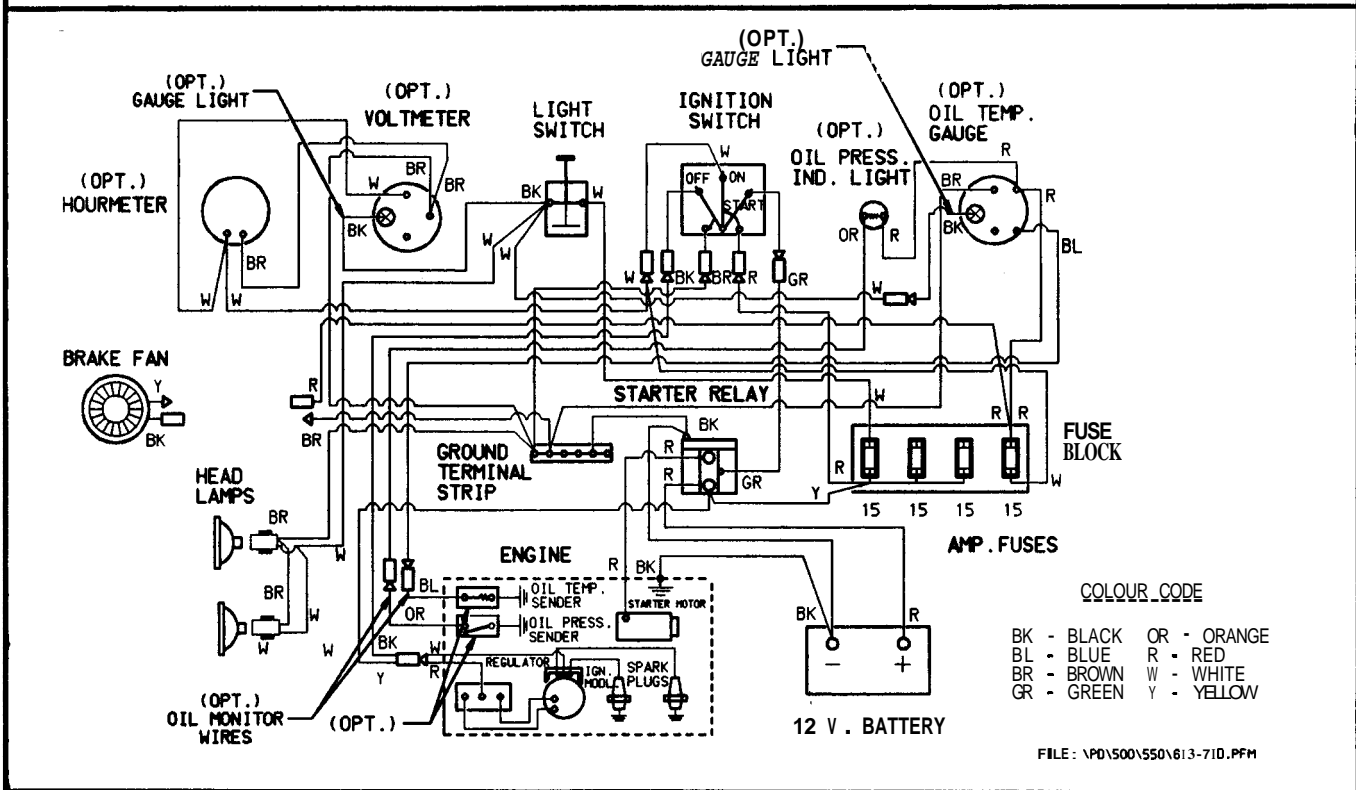
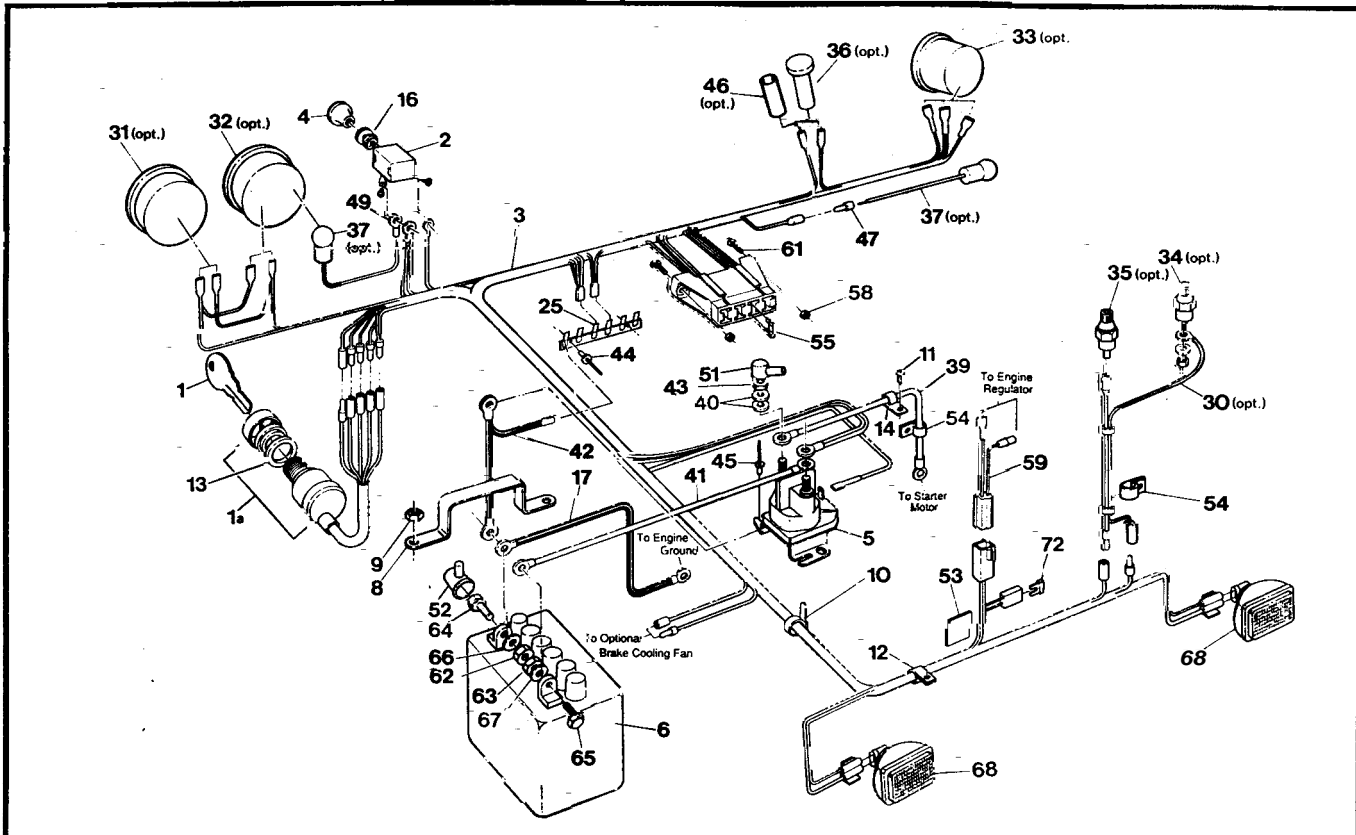
Ref	Part No.	Description	Qty	Ref	Part No.	Description	Qty
1	804-90	Frame Assem.	1	26	112-03	SHSS 5/16-18x3/8 1/2 DOG, PL	10
2	605-69	Gasket - GRC-36 Mat'l	4	27	803-17	Chain, Idler RC50-2 x 40P	2
3	117-15	Nut, Fin Hex 3/8-16 Zinc	80	28	117-64	Insert, 1/4-20	4
4	108-46	Washer 13/32x1.375x.12 Hi-Cart	16	29	112-31	HHCS 3/8-16x1.0 2B GR8	8
5	101-35	Bearing, Ball UC206A-20	12	30	112-14	HHCS 3/8-16x.750 GR5 Zc	2
5a	101-41	Bearing, Ball UC206A-16	8	31	108-15	Washer 3/8 SAE Zinc	1
6	108-06	Lockwasher, 3/8" S/R, Zinc	82	32	103-17	HHCS 3/8-16x1.00 GR5 Zc	2
7	103-88	C. Bolt, 3/8-16x1.00 GR5 Zc	30	43	603-17	Chain, RC50-2 x 42P - Front	2
8	605-99	Gasket, Flange	12	44	603-20	Chain, RC50-2 x 70P - Mid	2
9	605-89	Gasket, Outer Bearing Flnge	12	45	603-21	Chain, RC50-2 x 96P - Rear (Refs 27, 43, 44 & 45 incl. Ref. 53)	4
10a	605-63	Flange, Bearing - Outer		46	117-35	Nut, Wheel 7/16-20 - Zinc	ix8
10b	101-20	Flange Assem., Bearing		47	125-26	Valve, Tire - (see Ref. 48)	8
11	102-14	Seal, <b>CL</b> CR #12361		48	125-15C	Rim, Char. 8x7-5 Bolt (incl. Ref 47)	8
12	102-15	Seal, Oil CR #12379		49	126-96	Tire, Goodyear Runamuk 22x10-8, (see Refs 50 & 51)	8
13	605-97	Flange Assem, Outer (incl. Refs. 11 & 12)		50	126-98C	Tire & Rim Assem. - LH (incl. Refs 47, 48 & 49)	4
14	112-39	C. Bolt, 3/8-16 x 1-3/4		51	126-97C	Tire & Rim Assem. - RH (incl. Refs 47, 48 & 49)	4
15	103-67	C. Bolt, 3/8-16 x 6" GR2 Zc		53	100-96	Con. Link, RC50-2 H.D.	1x 10
16	810-36	Bearing Extension (uses Refs. 17 & 18)	2	55	125-61	Spring, Tensioner	x6
17	108-34	Washer, 7/16" SAE Zinc		56	603-61	Slider Block	x6
18	103-81	HHCS, 7/16-20x2.5" GR5 Z		57	125-78	Spring, Spacer	x6
19	103-80	Stud, Wheel 7/16-20 x 1.125 #B271, (see Refs. 20,21)	5x8	58	603-77	<b>Arm</b> , Chain Tensioner - Upr	x6
20	810-73	Axle Assembly - Front/Rear (incl. Ref. 19)	4	59	603-76	<b>Arm</b> , Chain Tensioner - Lwr	x6
21	810-75	Axle Assembly - Mid (incl. Ref. 19)	4	60	100-01	Pin, Cotter 1/8 x 1.50 Zinc	x6
22	810-45	Shaft, Idler - 11T	2	61	603-78	Pin, Pivot	x6
23	604-84	Frame Assem., Battery	1	62	603-66	Spacer, .500 ID x .625 LG	x6
24	810-28	Sprocket, Double - 24T	6	63	647-10	Chain Take-Up Replacement Kit (incl. Refs. 55 thru 62 as shown)	6
25	810-29	Sprocket, M/R Axle - 19T	8				





# Response Parts Manual 8.0 Fuel System and Seat Assembly

Ref	Part No.	Description	Qty	Ref	Part No.	Description	Qty
1	803-50	Handrail Assembly	1	21	608-42	Fuel Hose, 110"	1
2	108-03	Lockwasher, Split Ring 1/4"	4	22	125-64	Fuel Filter, G 81-4	1
3	112-41	PHMS, PHIL 1/4-20x1.250Zc.	6	23	100-12	Clamp, Gear 2.25" HF36	2
4	608-39	Back Pad Assembly	1	24	125-94	Hose, Filler	1
5	608-43	Seat, Bench	1	25	126-47	Fuel Neck Assembly	1
6	608-30	Angle, Left	1	26	126-46	Cap, Fuel	1
7	608-31	Angle, Right	1	27	127-21	Hose, Vent 86"	1
9	103-72	Screw, IHWH T/C Slot 1/4-20x3/4	6	28	126-50	Male Connector, 1/4"	1
13	804-17	Frame Assembly, Seat	1	29	126-94	Clamp, Nylon Wire, 1/4"ID	5
16	120-04	Washer, .195IDx.50ODx.082	2	30	112-04	HHCS 1/4-20x3/4 Gr 2 Zinc	4
17	608-32	Tool <b>Box</b>	1	31	117-10	Locknut, Nylon #10-24 Zinc	12
18	608-28	Pickup Assembly, Fuel (See Ref. 19)	1	32	126-62	Clamp, Gear 1/4 2-Ear #050	1
19	608-24	Tank, Fuel 32 litre (incl. Ref. 18)	1	33	126-93	Clamp, Nylon Wire, 1/2" ID	5
20	100-70	Clamp, Gear 1/2" HF4	4	34	108-08	Washer, .28x.62x.04 Zinc	4
				35	120-09	Rivet, 3/16 x 1	7
				36	120-13	Rivet, 3/16x5/8	2
				37	702-06	Foam Cushion	4
				38	117-54	<b>Locking</b> PAL Nut, 1/2-20Zc	1
				39	112-07	RHMS, 10-24x 1.25 Zinc	12
				40	108-42	Washer, .062x7/32x1.00 Zc	12



Ref	Part No.	Description	Qty	Ref	Part No.	Description	Qty
1	100-39A	<b>Key</b>	1	41	613-2f	Power Cable	1
1a	126-17	Ignition Switch, incl. Ref 1	1	42	613-58	Ground Wire	1
2	100-62	Switch, Light	1	43	117-2C	Nut, Fin. Hex, 1/4-20Zinc	2
3	613-71	Main Wire Harness, incl. Fuse Holder	1	44	120-1:	Rivet, 1/8x7/16	2
4	126-76	Knob, Light	1	45	120-12	Rivet, 3/16x5/8	2
5	613-68	Starter Relay	1	46	118-48	Heat Shrink, 2 x 1/2 (opt.)	1
6	100-25	Battery, P-22NF245TL	1	47	118-02	Terminal, <b>Male-#76-</b> 1251-81	1
8	604-52	Battery Retaining Bracket	1	49	118-3C	Terminal, Eye - #10	1
9	117-21	Locknut, Nylon 5/16-18 Zinc	2	51	613-45	Terminal Insulator (6 ga.)	1
10	100-64	Tie Rap, 5.5" - Black	10	52	613-4f	Terminal Insulator (2 ga.)	1
11	103-48	Pan HD PHIL T/S #10x5/8 AB Zinc	1	53	702-Of	Foam Cushion	2
12	126-93	Clamp, Nylon Wire - 1/2" ID	12	54	126-83	Clip, Hose 5/16 I.D. #C-950P	2
13	108-57	Washer, 3/4 ID, Tooth <b>Lock</b>	1	55	118-49	Fuse, 15 Amp, 2-prong (ATOI)	4
14	126-94	Clamp, Nylon Wire - 1/4" ID	1	59	613-33	Harness, Regulator	1
16	108-55	Lockwasher, Ext. Tooth 7/16"	1	61	112-51	Screw, IHWH T/C #10-24x5/8	2
17	613-18	Ground Wire	1	62	117-2C	Nut, Fin. Hex 1/4-20Zinc	1
25	613-37	Ground Terminal Strip	1	63	117-03	Nut, Fin. Hex 5/16-18 Zinc	1
30	613-38	Oil Monitor Wires (opt.)	1	64	112-04	<b>HHCS, 1/4-20x3/4" GR2 Zc</b>	1
31	632-15	Hourmeter, #56548-10 (#876EM) (opt.)	1	65	112-01	<b>HHCS, 5/16-18x.750 GR5Zc</b>	1
32	633-10	Voltmeter, #07583-15 (#830EM) (opt.)	1	66	108-08	Washer, 1/4 SAE Zinc	1
33	634-11	<b>Oil</b> Temp. Gauge #07556-88 (#828EM) (opt.)	1	67	108-24	Washer, 5/16" SAE Zinc	1
34	634-12	Oil Temp. Sender #02024-00 (opt.)	1	68	613-69	Headlamp, Halogen	2
35	52.099.06	<b>Oil</b> Pressure Switch, 6 psi (opt.) (Kohler #)	1	72	118-51	Fuse, 30A 2-prong (AT030)	1
36	634-08	Engine Oil Pressure Light (opt.)	1				
37	634-10	Light Kit, #06215-00 5/8" dia., see Ref. 32,33 (opt.)	2				
39	613-49	Cable Starter	1				
40	108-03	Lockwasher, 1/4 Zinc	2				

# **ARGO Products Manufactured by:**

**Ontario Drive & Gear Limited**

P.O. Box 280, Bleams Road

New Hamburg, Ontario

CANADA NOB 2G0

Phone: (519) 662-2840

Fax: (519) 662-2421

**ODG** *Dedicated to quality and performance*